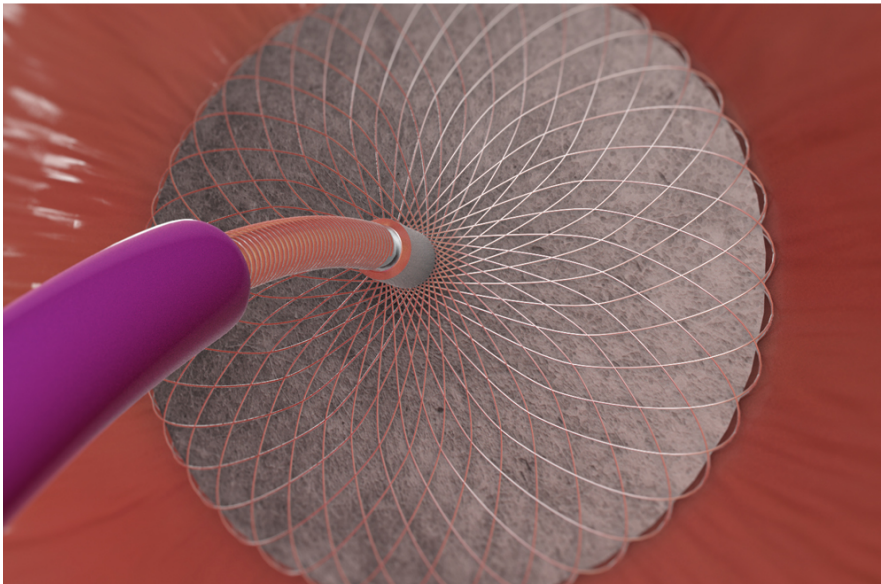
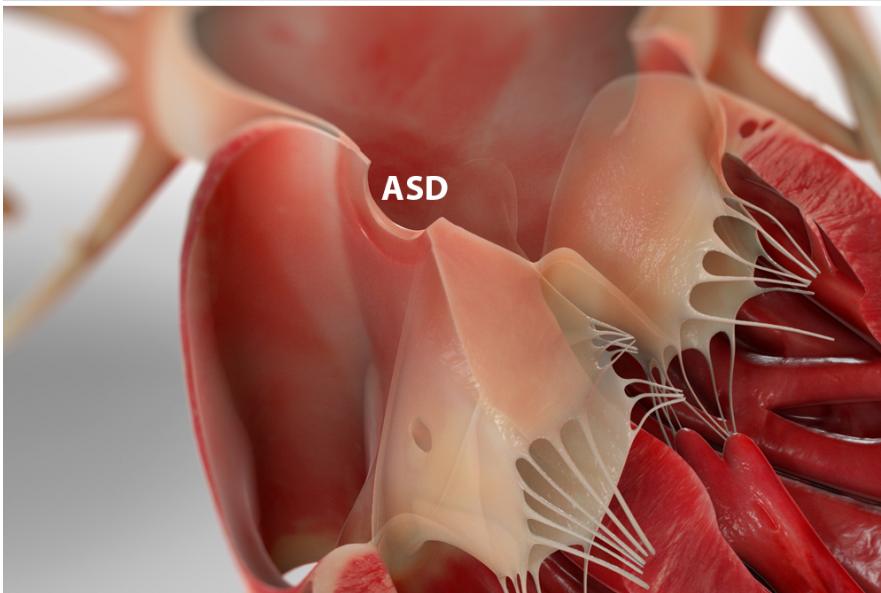
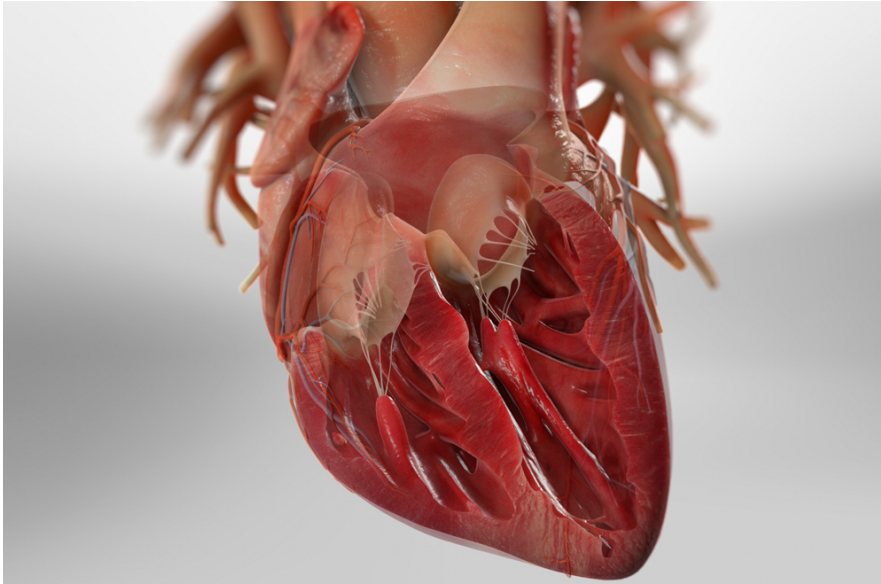




Atrial Septal Defect Repair (Catheter Method)



Overview

This procedure fixes a hole called an "ASD." It's in the wall between the heart's two upper chambers. These chambers are called the "atria." The hole lets blood without oxygen mix with blood that has oxygen in it. This decreases the amount of oxygen pumped out to the body. We usually close an ASD early in childhood to avoid health problems later on.

Preparation

To begin, we give the patient medicine to put them to sleep. A soft, thin tube called a "catheter" is put into a large blood vessel in the leg. With the help of an imaging device, the doctor guides it up through the body. It is pushed into the heart and to the ASD.

Patching the hole

Now, we push an implant up through the catheter and into the heart. We guide it into the ASD. It flattens against both sides of the hole, sealing it.

End of procedure

When the procedure is done, we close and bandage the incision. We closely watch the patient in the hospital until it's safe for them to go home. Follow your care tips for a safe recovery.