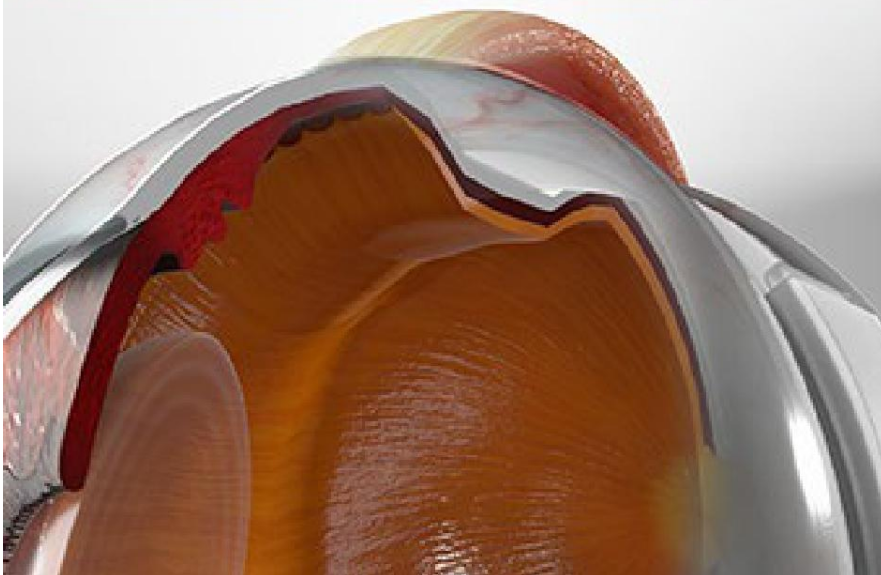
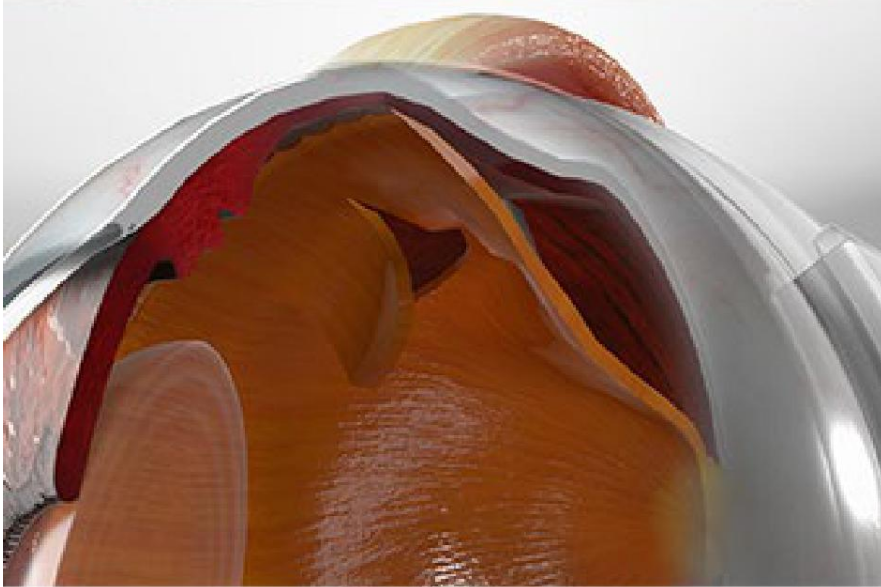
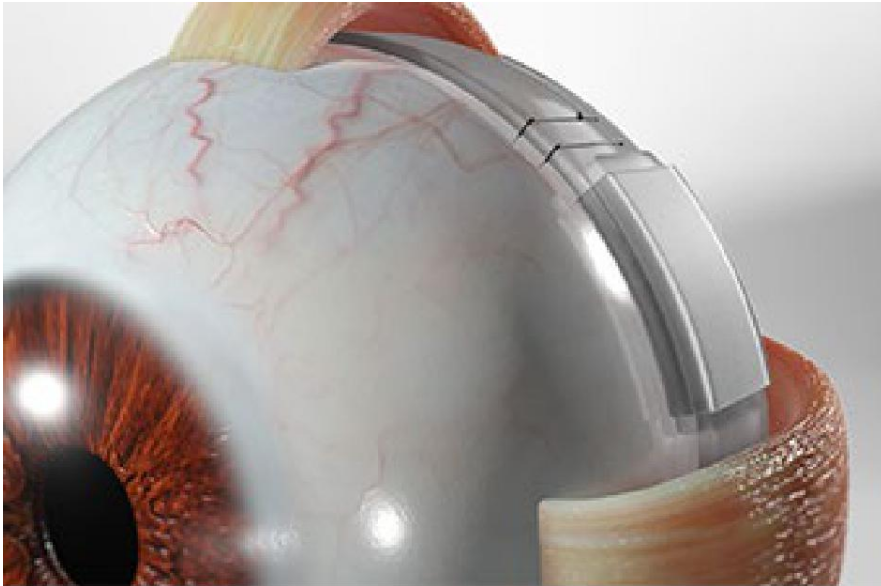




Scleral Buckling



Overview

This surgery stabilizes a detached retina. It uses a band to hold your retina in place.

Preparation

To begin, you are given medicine to numb and relax you. You may be put to sleep. Your eye may be dilated with eye drops.

Treating the retina

Next, the surgeon inspects your retina. If you have a hole or tear in your retina, your surgeon may seal it. Often, this is done with a special probe that uses intense cold to freeze the damaged area.

Securing the buckle

Then, a small band, called a "buckle," is secured to the outside of your eyeball. It may be placed on just part of your eyeball. Or it may go all the way around. The band gently pushes inward. It brings the layers of the eye together so the retina can reattach. It will keep the jelly in your eye from tugging on your retina. The buckle will be left in place permanently.

End of procedure

When the surgery is done, your eye is covered with a patch. You're watched in a recovery room. Follow your doctor's instructions as you recover.