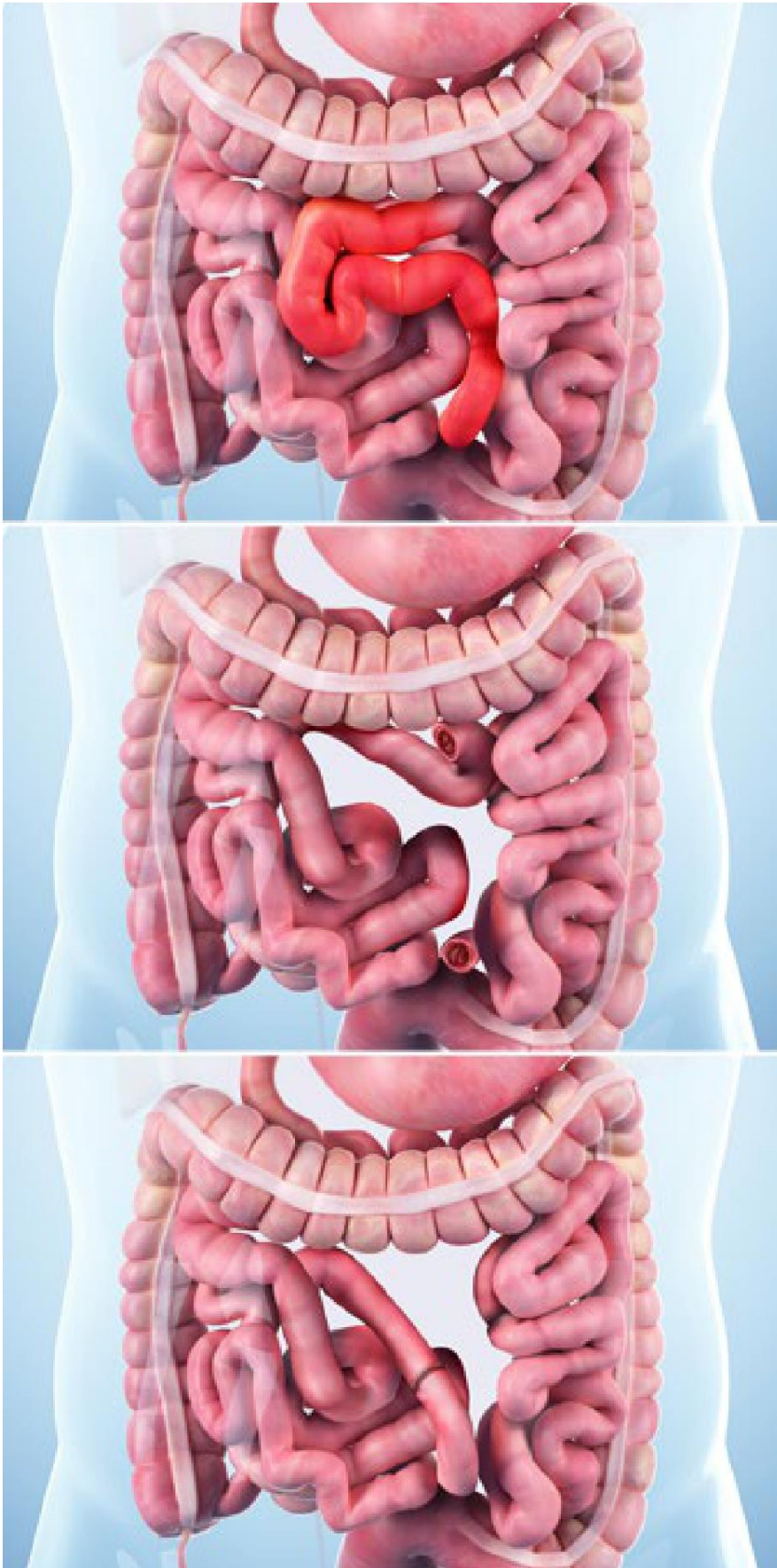




Small Bowel Resection



Overview

This surgery removes part of your small intestine. It's used for disease or damage that can't be treated with other methods.

Preparation

To begin, you're put to sleep. An incision is made to reach your intestine. Or, if you are having a laparoscopic surgery, a few small openings are made in your skin. One is for a lighted camera we call a "laparoscope." The others are for tiny instruments.

Removal

Now, your surgeon seals off the diseased part of your intestine with clamps. The clamped-off section is carefully cut away and removed. Finally, the free ends of the intestine are brought together and connected so food can move through your digestive system. You may not have enough healthy intestine left to make this connection. If so, your surgeon can perform another procedure to let your small intestine store and get rid of waste.

End of procedure

After the surgery, you're watched in a recovery room as you wake up. You'll stay in the hospital as your body heals. When you go home, you'll need to make changes to your diet. Follow your surgeon's plan for a safe recovery.