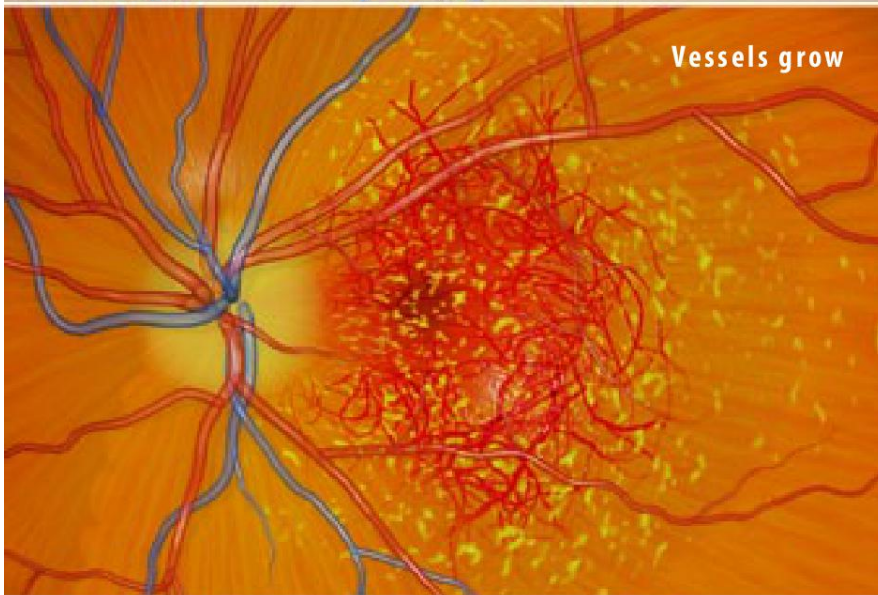
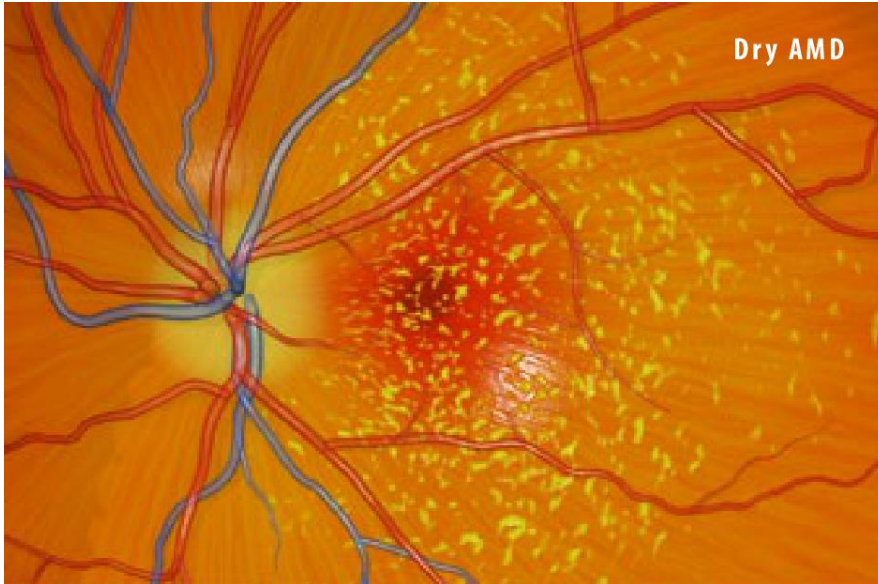




Age-Related Macular Degeneration, Wet Type (Wet AMD)



Overview

This disease causes vision loss. It affects the center of your visual field. Of the two types of AMD, it is the more advanced type. It usually affects both eyes, but in some people only one eye is affected. This type of degeneration is an abnormal buildup of fluid beneath the macula. The macula is part of the light-sensitive retina tissue that sees fine details in the center of your visual field.

Causes and Risk Factors

The cause of this disease is not fully understood. It develops in eyes that have already had the other type of AMD, called "dry AMD." Dry AMD is a gradual thinning and breaking down of the macula. With wet AMD, blood vessels may begin to grow abnormally beneath the damaged macula. These vessels can leak, causing a buildup of fluid. This interferes with the macula's function.

Symptoms

Symptoms include a loss of central vision. Signs may appear blurry. Straight lines may appear bent. Colors may seem muted. Faces may become hard to recognize.

Treatment

Treatment options for this disease may be able to stop vision loss from getting worse. You may benefit from medications injected into the eye. You may benefit from laser treatments. Your doctor can create a care plan that is right for your needs.