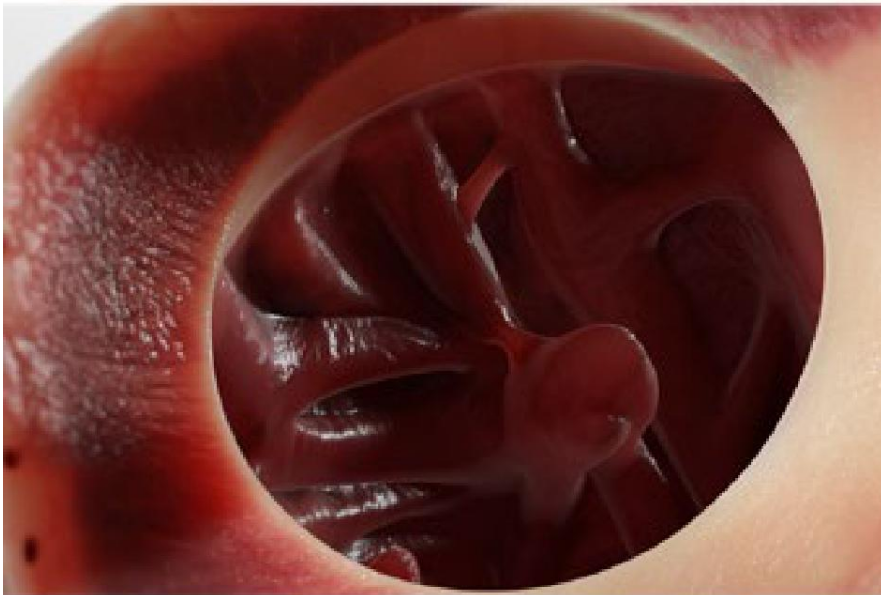
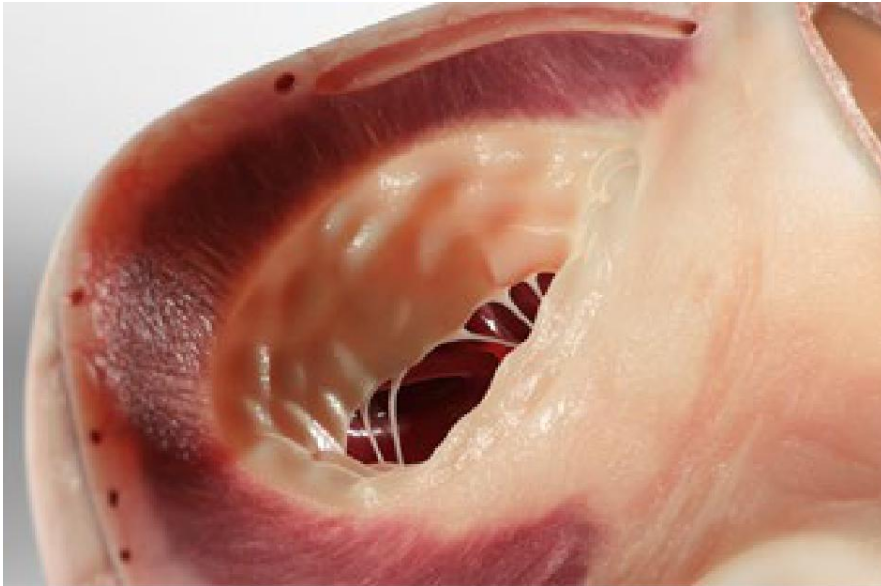




Valve Replacement Surgery



Overview

This surgery replaces a defective valve in your heart with one that works properly. The new valve may be mechanical. Or, it may be a valve taken from a human or animal donor.

Blood Flow Diverted

To begin, you're put to sleep. The surgeon exposes your heart. It's stopped for the surgery. A machine will pump your blood for you.

Replacing the Valve

Next, the surgeon carefully opens your heart. There are four valves inside. Any can be replaced, but in most cases, your surgeon will be replacing the mitral or aortic valve. The defective valve is detached and removed. Then, the new valve is secured in its place.

End of Procedure

Finally, your heart is restarted, and your chest is closed and bandaged. Follow your surgeon's plan for a safe recovery.