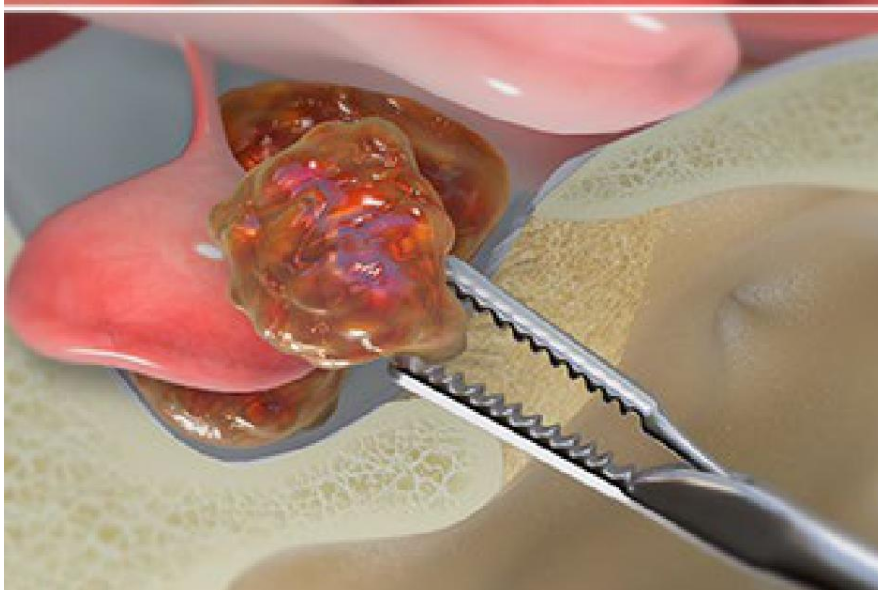
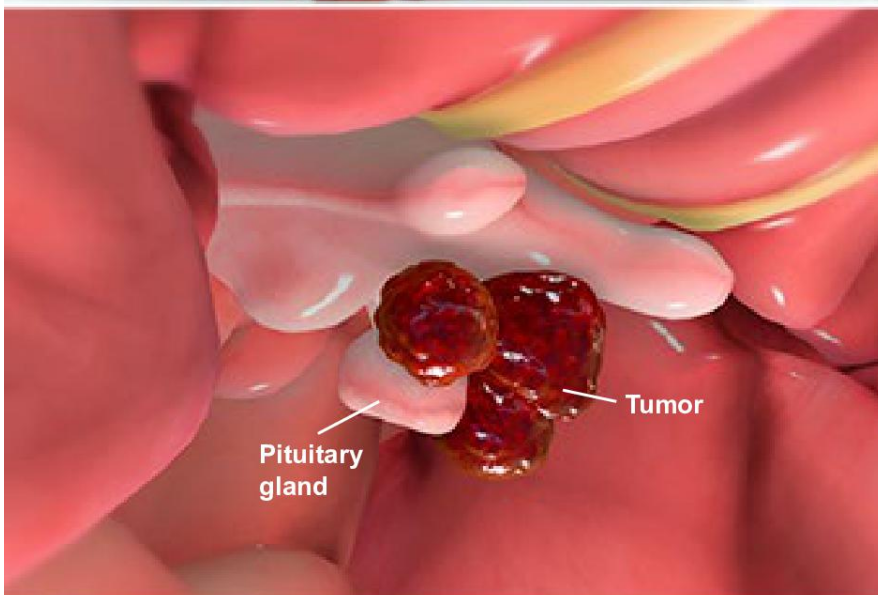
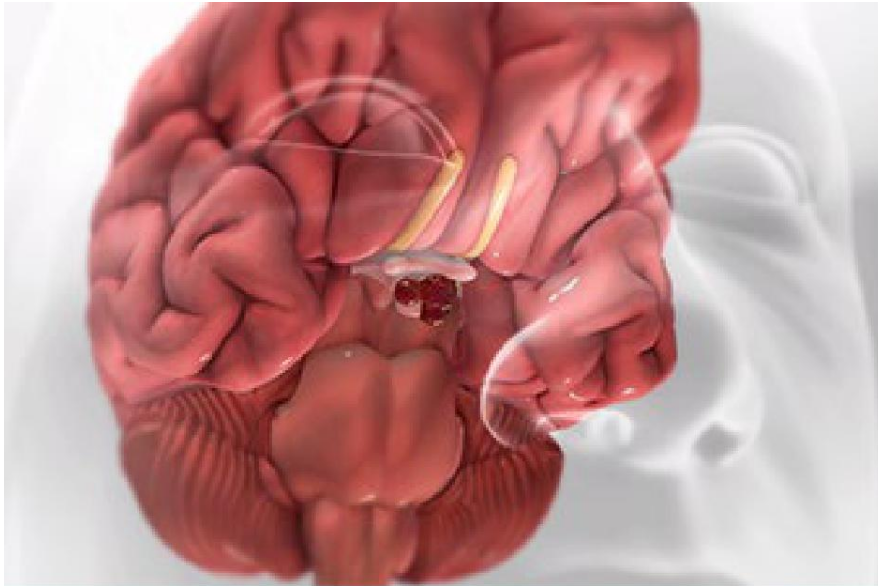




Pituitary Tumor Surgery (Transsphenoidal Approach)



Overview

This surgery treats one or more tumors on or near your pituitary gland. That's a small organ at the base of your brain. Your surgeon will reach the pituitary gland through your nostrils.

Preparation

To begin, you are anesthetized. An image-guidance system may be put on your head. It helps your surgeon find your pituitary gland. With the help of an endoscope (a thin instrument with a light and camera) or a surgical microscope, the surgeon removes a small piece of your septum. That's the tissue between your nostrils. Then, an incision is made in the back of your nasal cavity.

Procedure

A small piece of bone is removed. This lets the surgeon reach your pituitary gland. Any tumors that are growing on your gland or pressing against it are removed through your nostril. Then, the space around the gland is packed with fat from your abdomen, and the chamber is sealed.

End of procedure

Finally, soft splints may be placed in your nose to help control bleeding and swelling. You are taken to a recovery area. You'll stay in the hospital after the surgery so you can be monitored. Your healthcare provider will give you tips to help your recovery.