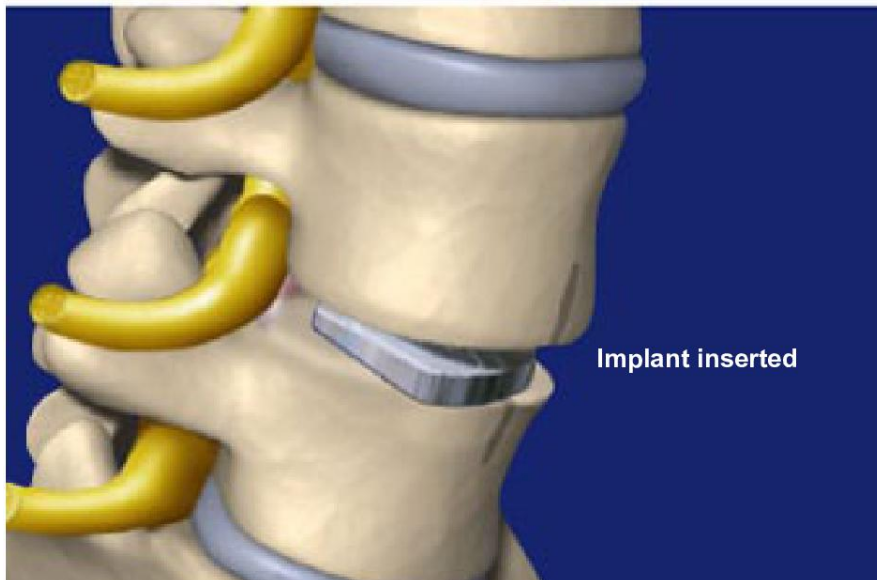
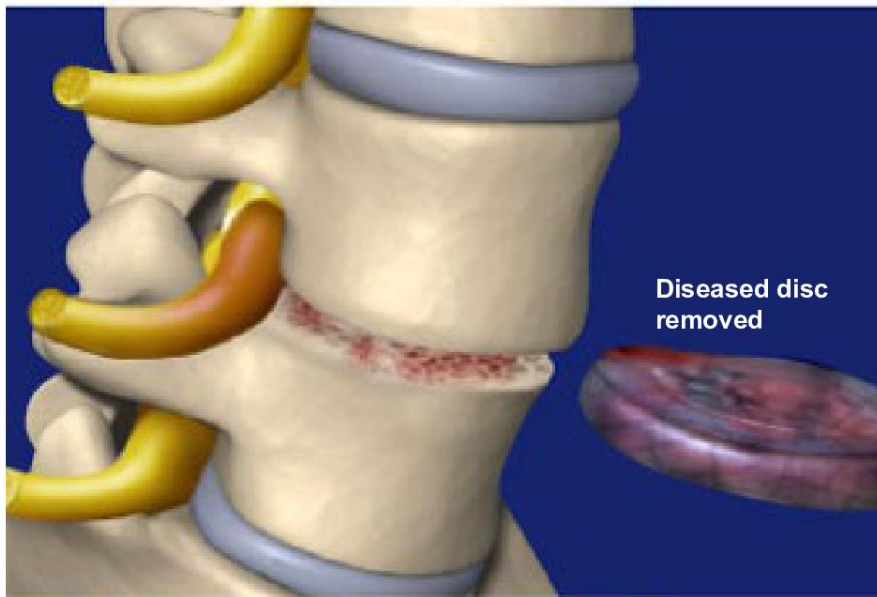
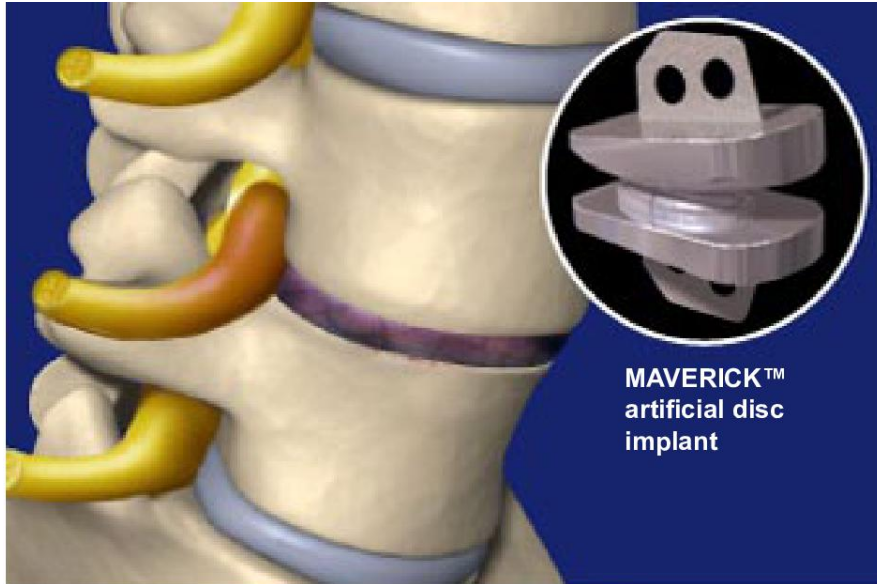




Disc Replacement, Lumbar (Maverick™)



Overview

This surgical procedure replaces a damaged or diseased disc in the lumbar spine with an artificial disc that restores the natural alignment of the spine. Unlike fusion surgery, which causes the vertebrae above and below the problem disc to grow together into a single bone, the artificial disc preserves spine motion at that level.

Preparation

After anesthesia is administered and the patient is positioned, the surgeon creates a small incision in the abdomen to access the lumbar spine.

Clearing the Vertebrae

The surgeon carefully removes the problem disc material and prepares the surfaces of the vertebrae for the artificial disc.

Inserting the Implant

The upper and lower sections of the implant are placed together and positioned between the vertebrae.

Securing the Implant

The spine is returned to normal posture. The implant restores the spine to its proper height and alignment. The spine will be able to move in all directions, which may protect the upper and lower levels of the spine from breaking down.

Pressure Relieved

Pressure from pinched nerve roots may be reduced which may relieve chronic pain in the legs. Removal of the painful disc relieves chronic back pain from degenerative disc disease.

End of Procedure and Aftercare

The incision is closed and bandaged. The patient will return home after a brief stay in the hospital, typically lasting for one to three days. The surgeon will determine the length of the hospital stay and will guide the post-operative recovery. Physical therapy may be needed.

Maverick™ is a trademark of Medtronic, which has not authorized, sponsored or otherwise approved of this content.

© 2016 Swarm Interactive. Unauthorized duplication is strictly forbidden.