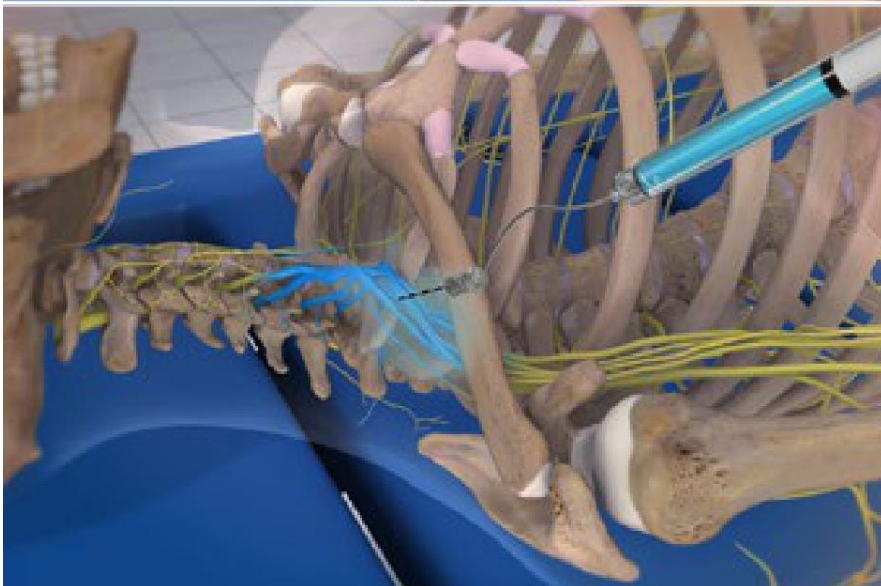




Brachial Plexus Block (Supraclavicular Approach, Electric Stimulation)



Overview

This is an injection of anesthetic. It numbs the nerves of the brachial plexus. These nerves travel from your spine to your arm. This injection can prepare you for surgery. It can help control your pain after surgery. It can also help manage chronic pain.

Preparation

To begin, you lie on your back. The doctor numbs your shoulder with local anesthetic.

Administering the Block

With the help of a nerve stimulation device, the doctor guides a needle to the brachial plexus nerves. Then, anesthetic is injected. It bathes the nerves. It blocks feeling in your arm.

Continuous Catheter

If your arm needs to be numbed for a long time, your doctor may place a thin tube called a "catheter." It's pushed through the needle and placed next to your nerves. Then, the needle is removed. Anesthetic can be given through the catheter as needed.

End of Procedure

When the block is done, your arm may be placed in a sling. Your arm may feel numb for several hours. Follow your doctor's instructions to manage your pain.