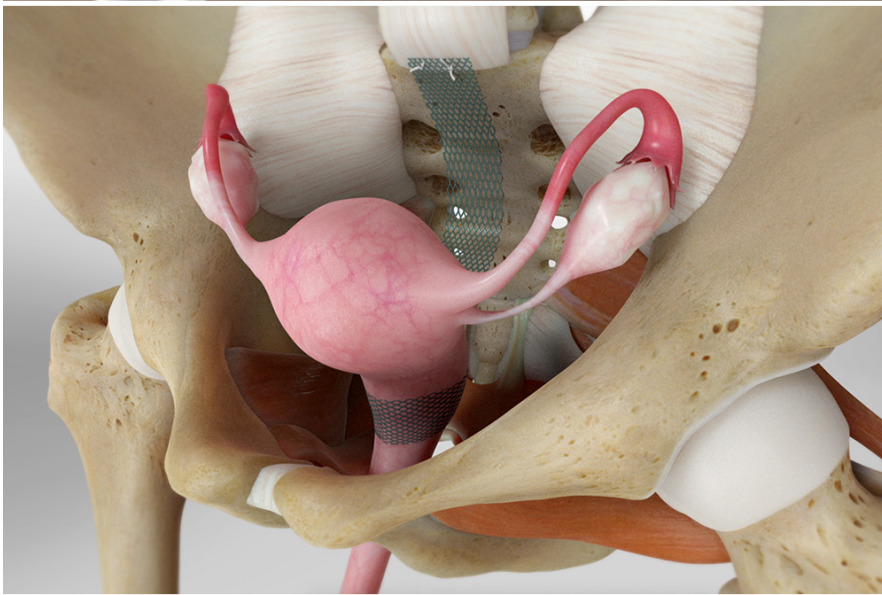
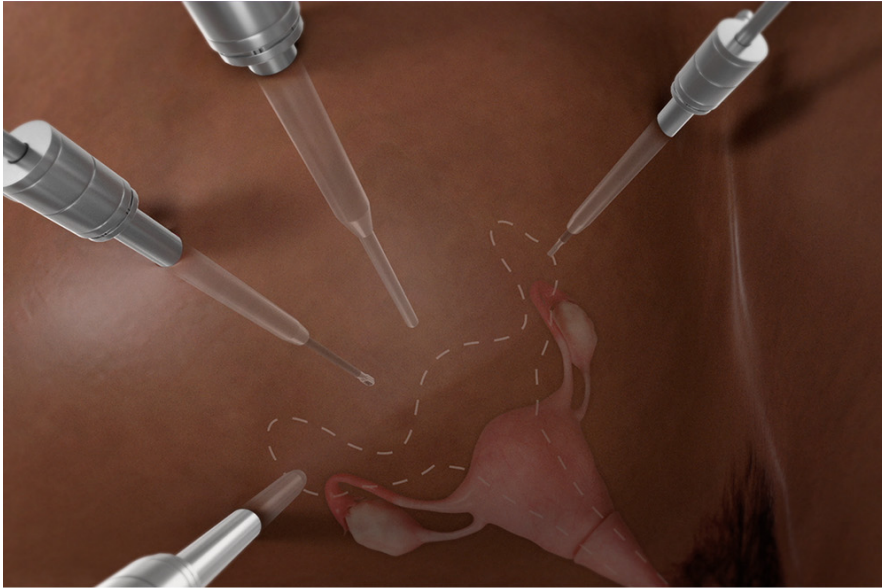




Sacrohysteropexy for Uterine Prolapse (Robot-Assisted)



Overview

This surgery lifts and supports your uterus (that's your womb). We do this surgery when your uterus has lost its support and fallen down into your vagina. That's a condition called "uterine prolapse."

Preparation

To begin, we put you to sleep. We fill your abdomen with air so we can see more clearly. We also make some small openings in your lower belly area. These openings are for a special camera (called a "laparoscope") and surgical tools. The camera and tools are held by robotic arms. At our computer station, we see a magnified, 3D view inside your body through the camera. And sensitive controls let your surgeon move the arms and use the tools with precision.

Attaching the mesh

Now it's time to attach a mesh to your cervix. That's the lower part of your uterus. We use the mesh to gently lift your uterus into its normal position. To keep it in place, we attach the mesh to a strong ligament at your lower spine. We then cover the mesh with the tissue that lines the inside of your belly.

Conclusion

After the surgery, we watch you closely as you wake up. You may be allowed to go home the same day. Or, you may stay overnight in the hospital. Follow your care tips for a safe recovery.