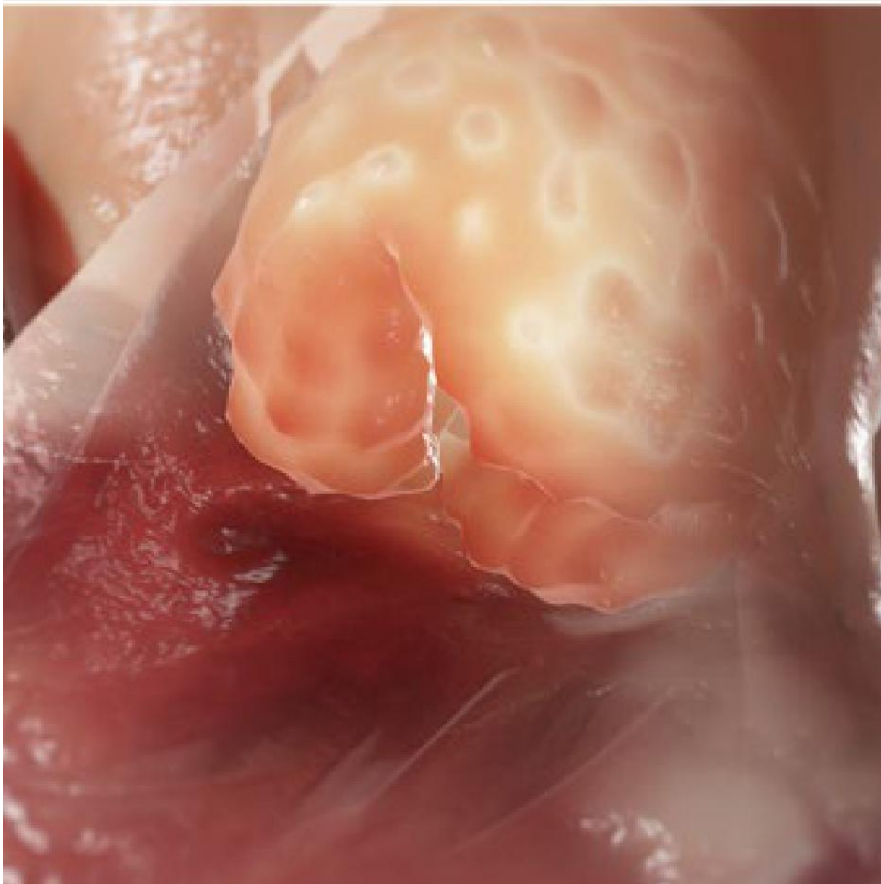
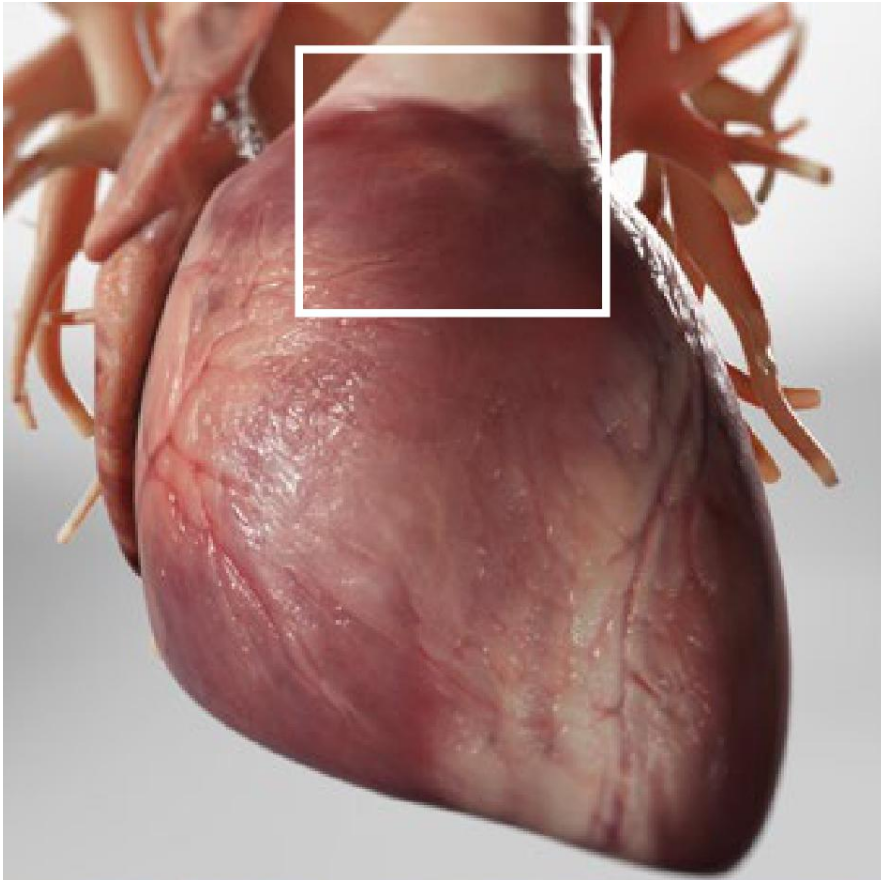




Pulmonary Valve Stenosis



Overview

This is a heart defect. It narrows the opening of your heart's pulmonary valve. This slows your blood flow. Pulmonary valve stenosis can be mild or severe.

Causes

What causes this problem? We don't fully understand it. In most cases, it happens when a baby is still developing in the womb. If you're born with it, you may have other heart defects, too. It can also develop later in life. When it does, it may be linked to rheumatic fever or certain syndromes. Your risk is also higher if you've had a pulmonary valve replacement.

Symptoms

Symptoms depend on the severity. With a mild defect, you may not notice any symptoms, or you may have no symptoms. Or, your doctor may detect a heart murmur. A more serious defect can cause chest pain, shortness of breath and fatigue. You may faint. Babies who are born with a severe stenosis show symptoms within a few days.

Treatment

Treatment depends on your needs. A mild stenosis may not need to be treated. With a more serious stenosis, you may need a procedure to repair or replace your valve. Your doctor will create a care plan that's right for you.