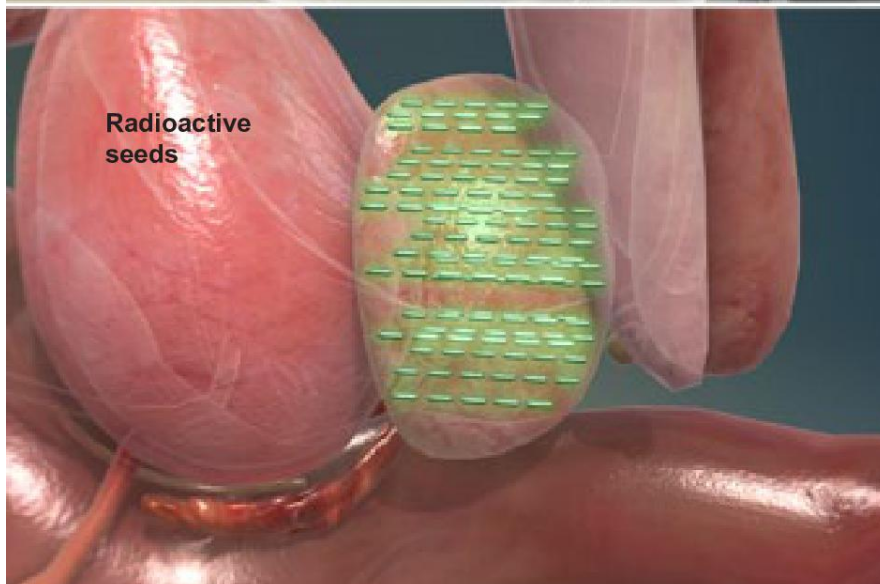
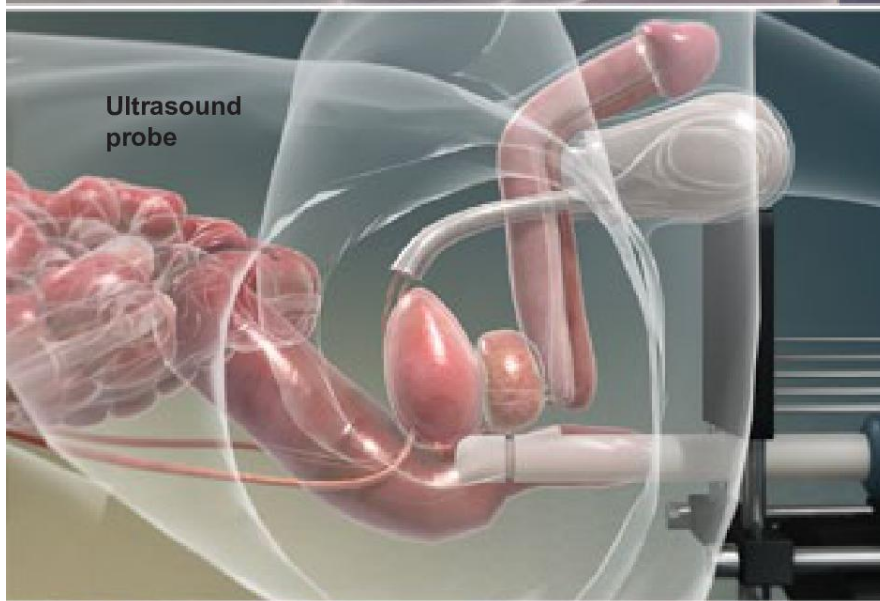




Prostate Seed Implantation (Permanent Low Dose Rate Brachytherapy)



Overview

This treatment uses radioactive pellets called "seeds" to destroy prostate cancer cells. The seeds are implanted in your prostate. Each seed is about the size of a grain of rice.

Preparation

To start the procedure, you are positioned comfortably and given a medicine to help you relax. The tissue between your scrotum and anus (called the "perineum") is numbed. Your physician uses an imaging technique to view your prostate. Commonly, an ultrasound probe is placed in your rectum. This provides a live image of your prostate's position and size.

Seeds Implanted

The physician inserts a series of thin needles through your perineum. These are carefully guided into your prostate. The radioactive seeds are inserted through the needles and positioned within your prostate. In a typical procedure, about 100 seeds are implanted. The needles are removed, leaving these seeds within your prostate. They emit a low dose of radiation for weeks or months. This radiation does not travel outside your prostate. It will not harm other parts of your body. The seeds do not need to be removed. They remain in your prostate permanently.

End of Procedure and Aftercare

When the procedure is complete, you are monitored for a brief time and then allowed to go home. You may resume normal activities the next day. Followup exams will be needed.