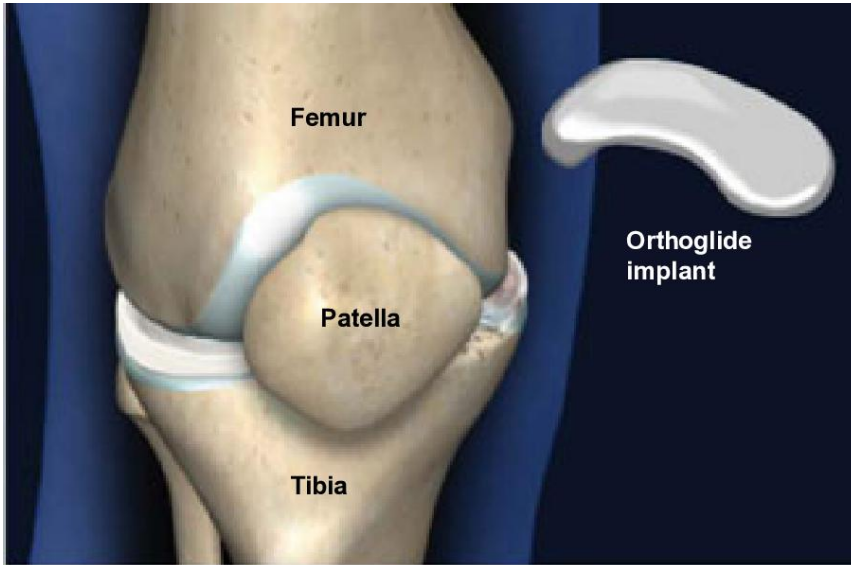




OrthoGlide® Medial Knee Implant



Overview

In this outpatient procedure, the surgeon inserts a thin metal implant to resurface lost or moderately damaged cartilage on the inner side of the knee joint, called the medial compartment. The implant can be used to replace articular cartilage, which covers the ends of the knee bones, and also fibrous meniscal cartilage, which creates a cushion between the bones.

Preparation

The patient is positioned so that the knee is clearly visible to the physician, and the area is cleansed and prepared. The surgeon makes a few tiny incisions around the knee joint and inserts an arthroscope to inspect the knee compartments. Loose cartilage may be trimmed and smoothed to prepare the joint for the implant.

Inserting the Implant

The surgeon makes a 2-inch incision on the front of the knee. The implant is inserted and placed over the damaged cartilage on top of the medial tibia. The shape of the implant holds it securely in place inside the joint without the need for screws or other devices. The implant provides a smooth surface for the femur to glide across, reducing pain associated with the bone-on-bone contact of osteoarthritis.

End of Procedure and Aftercare

The incision is closed with sutures, staples or surgical glue and the knee is bandaged. Patients are able to bear weight on the knee the same day as surgery.

