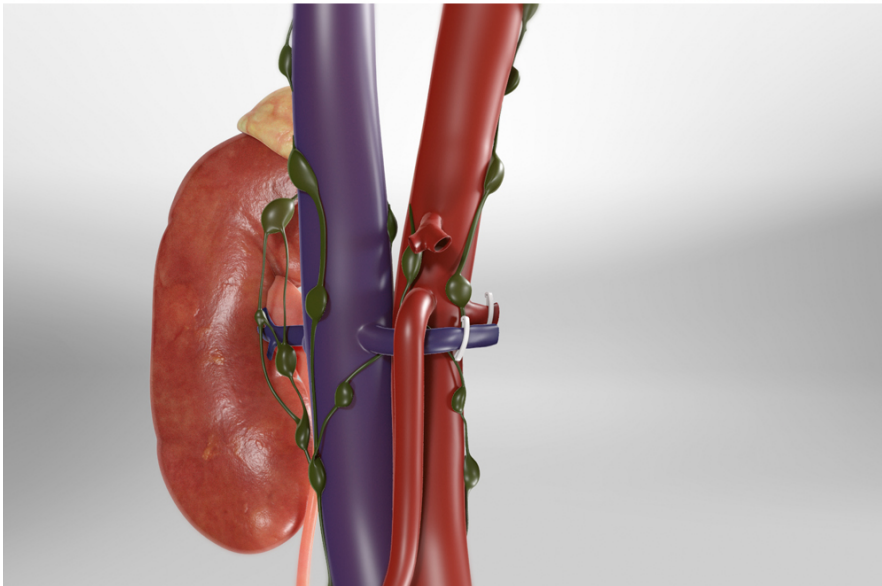
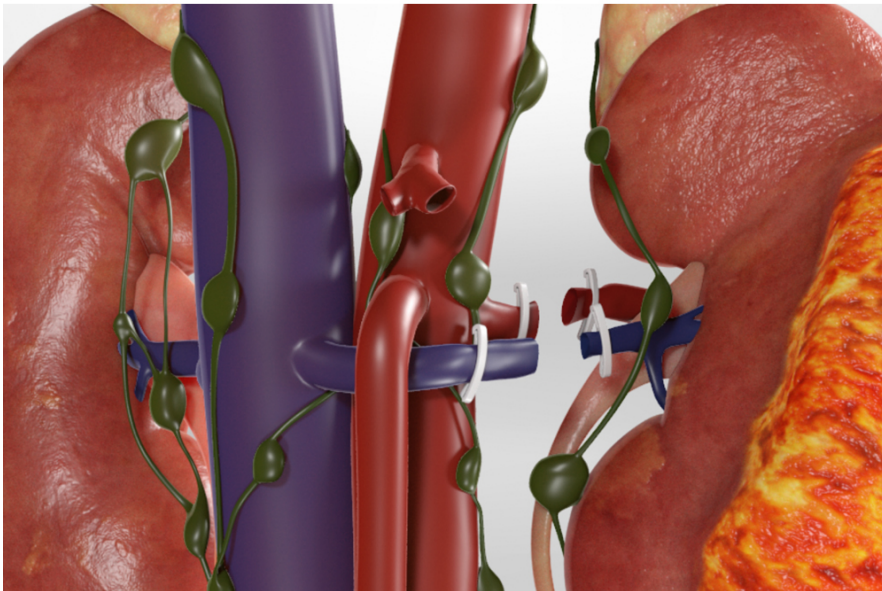




## Radical Nephrectomy (Robot-Assisted)



### Overview

This surgery removes one of your kidneys and some of the structures connected to it. Kidneys filter waste from your blood to create pee. We may do this surgery to take out a diseased kidney. Or, we may take out a healthy kidney so we can transplant it into someone else.

### Preparation

To begin, we put you to sleep. We fill your abdomen with air so we can see more clearly. We also make some small openings in the side of your belly area. These openings are for a special camera (called a "laparoscope") and surgical tools. The camera and tools are held by robotic arms. At our computer station, we see a magnified, 3D view inside your body through the camera. And sensitive controls let your surgeon move the arms and use the tools with precision.

### Removing the kidney

Now it's time to remove the kidney. We use the surgical tools to carefully separate it from nearby organs. We cut and close the blood vessels that go to the kidney so we can free it. Along with your kidney, we may need to remove other organs and structures, too. We may take some fatty tissue. We may take the adrenal gland. That's the small gland on top of the kidney. We may take part of the ureter. That's the tube that carries pee from the kidney to your bladder. We may take nearby lymph nodes and other tissues, too. We remove the kidney and these tissues through one of the incisions in your belly.

### Conclusion

After the surgery, we watch you closely as you wake up. You may need to stay in the hospital for one or more days. Follow your care tips for a safe recovery.