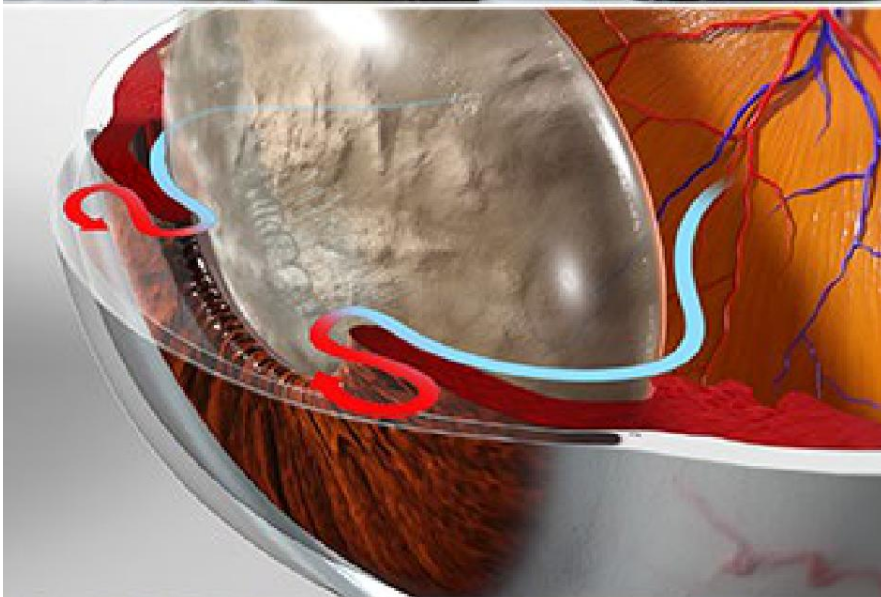




Glaucoma (Angle Closure Type)



Overview

This disorder, also called "narrow angle" or "closed angle" glaucoma, is a buildup of pressure in your eye. It usually happens very quickly. It can damage your optic nerve. It can cause blindness.

Cause

This type of glaucoma is caused by a problem with your eye's drainage canals. These canals are found at the edge of the iris. In a healthy eye, they drain fluid from your eye to regulate your eye's internal pressure. But these canals can become blocked. Often, this happens because a growing cataract pushes the iris forward and seals them shut.

Symptoms

When the canals are blocked, fluid pressure immediately begins building in the eye. This causes sudden, severe pain. You may have nausea and vomiting. Your vision may become cloudy, and you may see halos around lights.

Treatment

Angle closure glaucoma is a medical emergency. If you aren't treated within a few days, you may have permanent vision loss. Treatment includes eyedrops and medications to lower the pressure in your eye. You may need cataract surgery or laser treatment. And because your other eye may be at risk, both eyes may need treatment. Your doctor will create a care plan that's right for you.