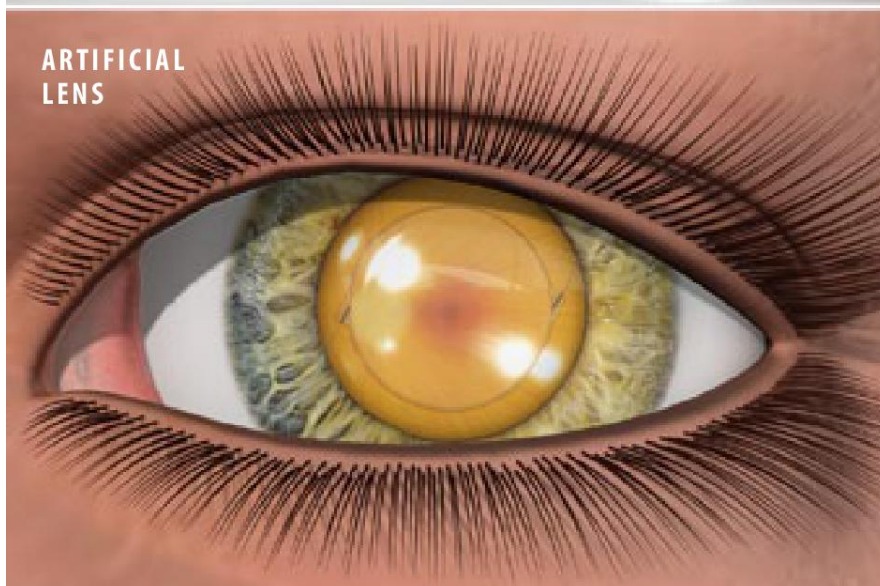
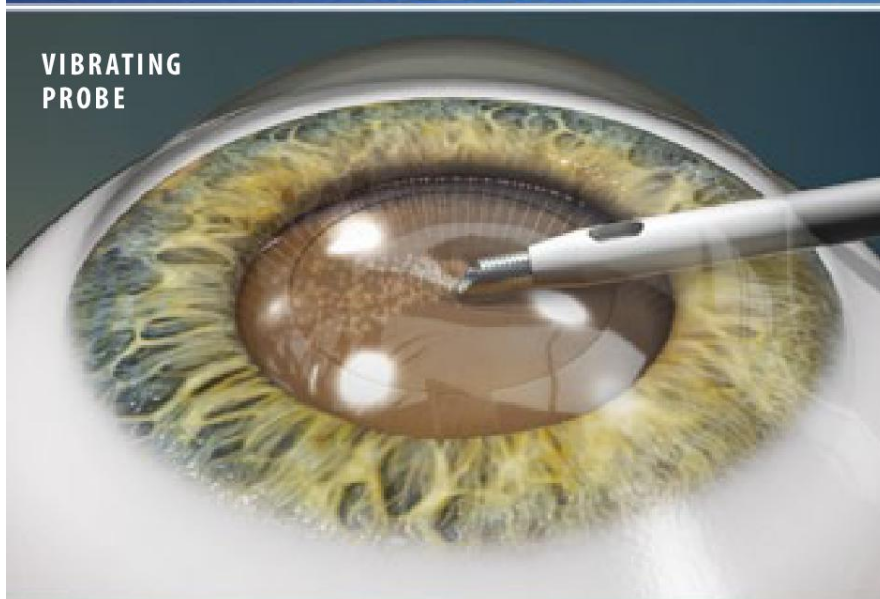
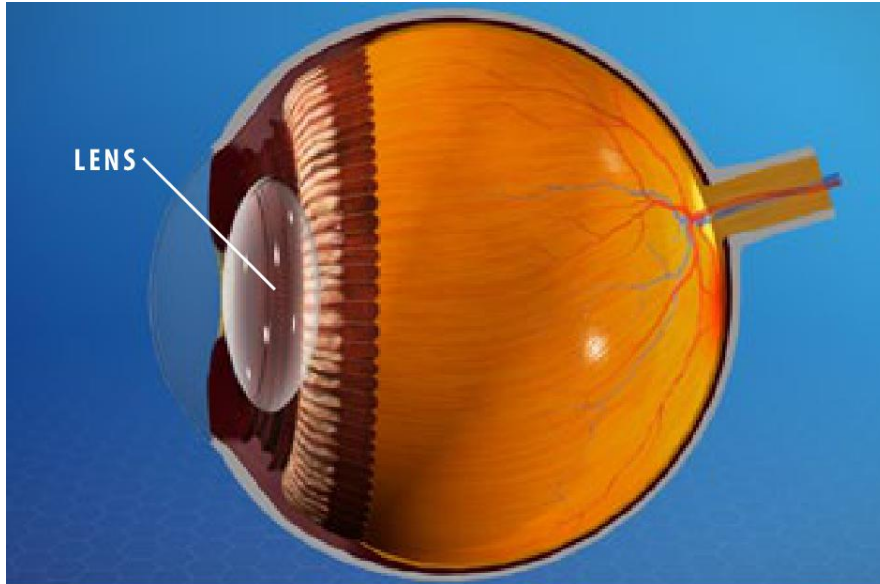




Refractive Lens Exchange (Clear Lens Exchange)



Overview

This is a surgery to improve your vision. It's typically used for people over age 40 who have very poor eyesight because of the way their eyes focus light. It can help if you have trouble seeing things up close or far away. Unlike LASIK, which reshapes your cornea, this surgery replaces the lens inside your eye. This procedure is quick, painless, and you can go home the same day.

Preparation

To begin, your eye is numbed with eyedrops. A tiny opening is made in the eye's cornea. That's the clear covering on the front of your eye. The surgeon removes the front of the lens capsule. This is the sac that holds the eye's lens.

Replacing the Lens

The surgeon uses a vibrating probe to break the lens into pieces. These pieces are carefully suctioned out of your eye. Then, the flexible artificial lens is injected. It unfolds in the lens capsule. It will focus light more accurately. Some lenses are designed to focus sight at a single, fixed distance. Others can let you see clearly at several distances.

End of Procedure and Aftercare

The incision in your eye is so tiny that it seals itself shut naturally, usually without the need for a suture. You will use special eyedrops as you heal to prevent infection. Followup visits will be needed.