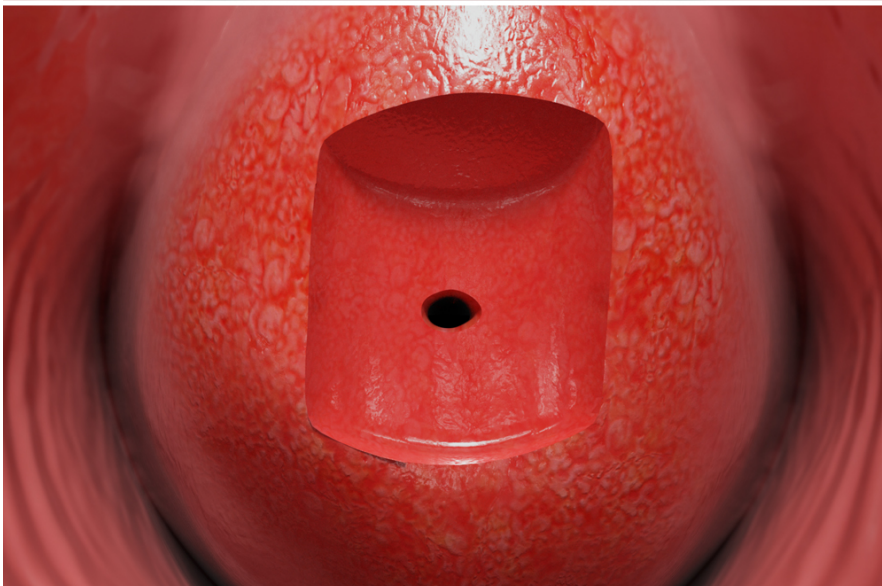
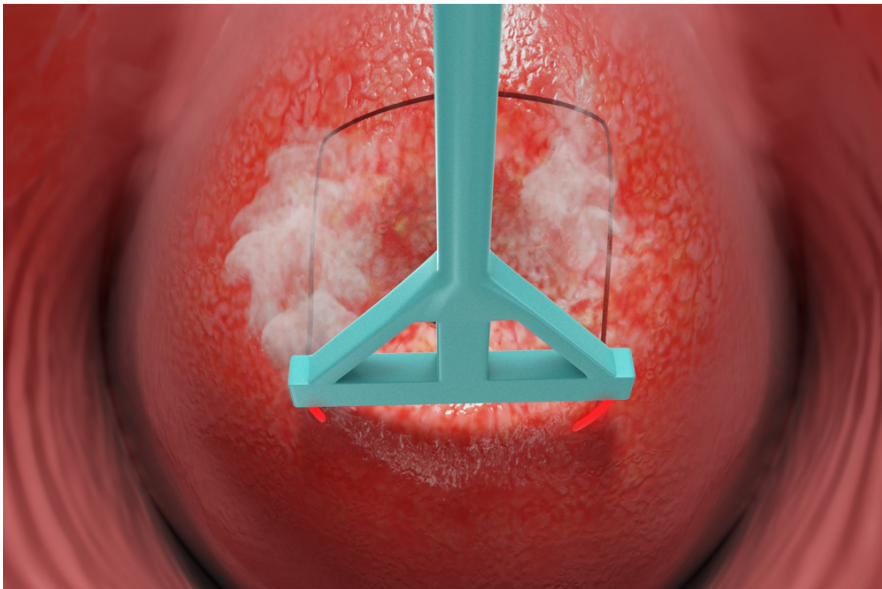
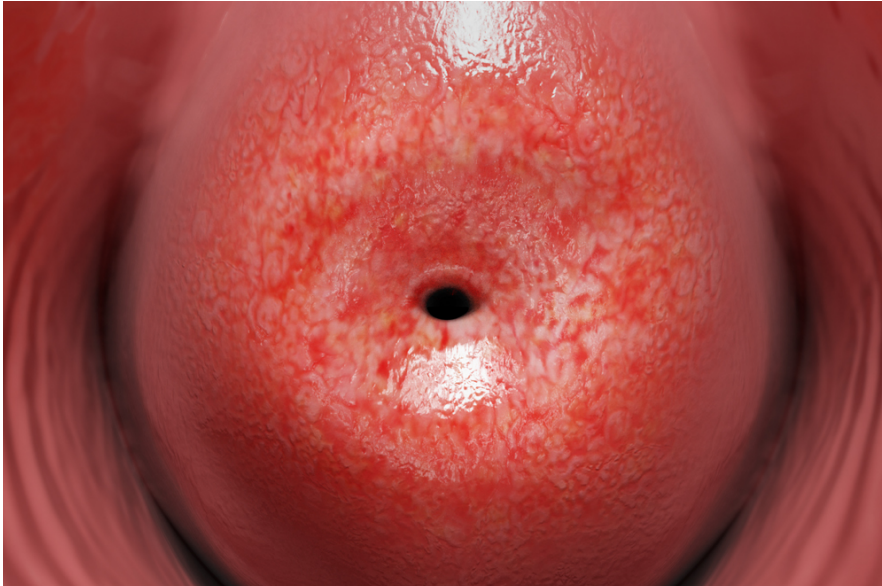




LEEP (Loop Electrosurgical Excision Procedure)



Overview

This procedure removes abnormal tissue from your cervix. Your cervix is the thick-walled tunnel that connects your vagina to your uterus. Your uterus is the organ responsible for pregnancies and menstrual periods. LEEP helps us diagnose and treat problems with your cervix. It removes cells that, if left untreated, may turn into cancer.

Preparation

To begin, you're placed on an exam table with leg supports and given medicine to make you feel relaxed and numb. Or, if you're having your procedure in the operating room, you'll be asleep before this step. We put a speculum in your vagina to hold it open so we can reach your cervix. We do the procedure while looking through a lighted magnifying device called a "colposcope." And we may put a solution on your cervix to make the abnormal tissues easier to see.

Removing Tissue

Now it's time to remove the abnormal cells. We do this with a thin device that has a loop of wire at the end. We charge the wire with an electric current. As we pass the loop across your cervix, it removes a thin layer of surface tissue. We collect this tissue for study.

Conclusion

When we're done, we watch you as you become awake and alert. Then, you can go home. Follow your care plan for a safe recovery. We'll send your tissue sample to the lab for study. We'll follow up with you soon about any next steps we need to take.