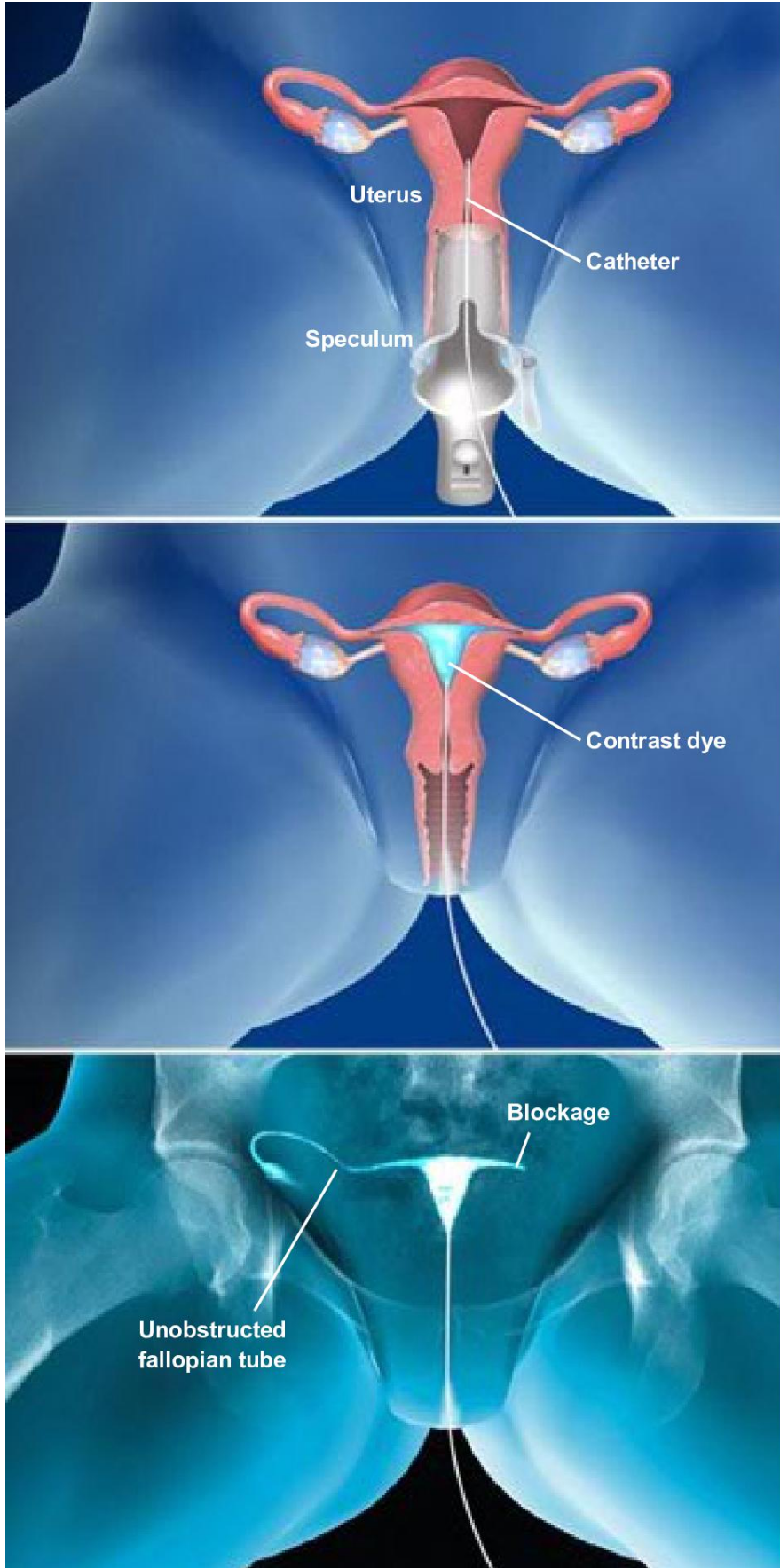




Hysterosalpingography (HSG)



Overview

This x-ray procedure shows the inside shape of your uterus and fallopian tubes. Your uterus is your womb. Your fallopian tubes are the tunnels your eggs travel through to get to your uterus. This x-ray shows us if there are blockages or other issues that make it hard for you to get pregnant.

Preparation

To begin, you lie on an exam table that supports your legs and feet. We carefully place a device called a "speculum" into your vagina. The speculum holds your vagina open so we can reach your cervix. That's the lower part of your womb. We may numb your cervix with an injection.

Imaging

Then, we put a small tube through the opening of your cervix and take out the speculum. We inject contrast dye into the tube. The dye fills your uterus. It should flow from your uterus into your fallopian tubes. And from your fallopian tubes, it should spill into your belly area. The dye shows up clearly on a video x-ray device called a "fluoroscope." We may ask you to move into different positions as we take video and still images with the fluoroscope.

Conclusion

The procedure takes just a few minutes. When it's done, you can go home. Follow your care tips for a safe recovery. Your doctor will follow up with you about your results.