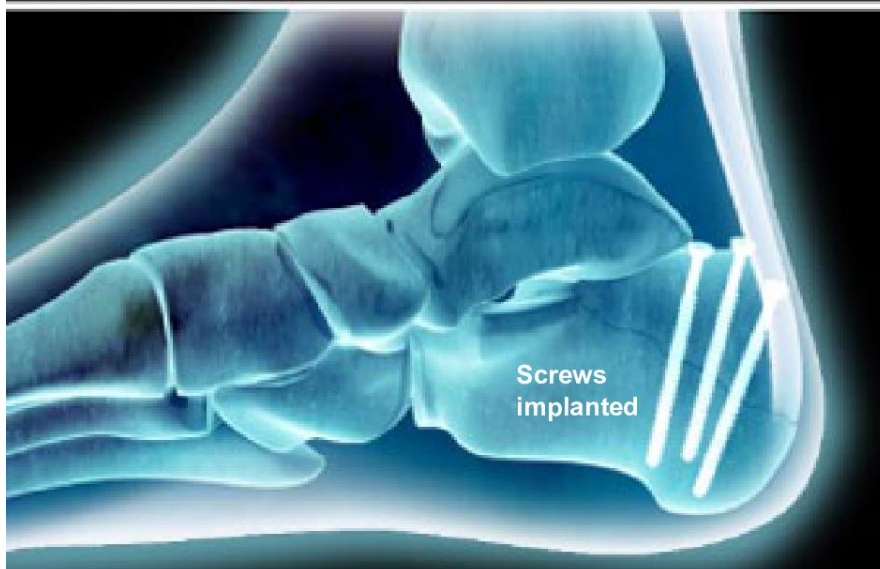
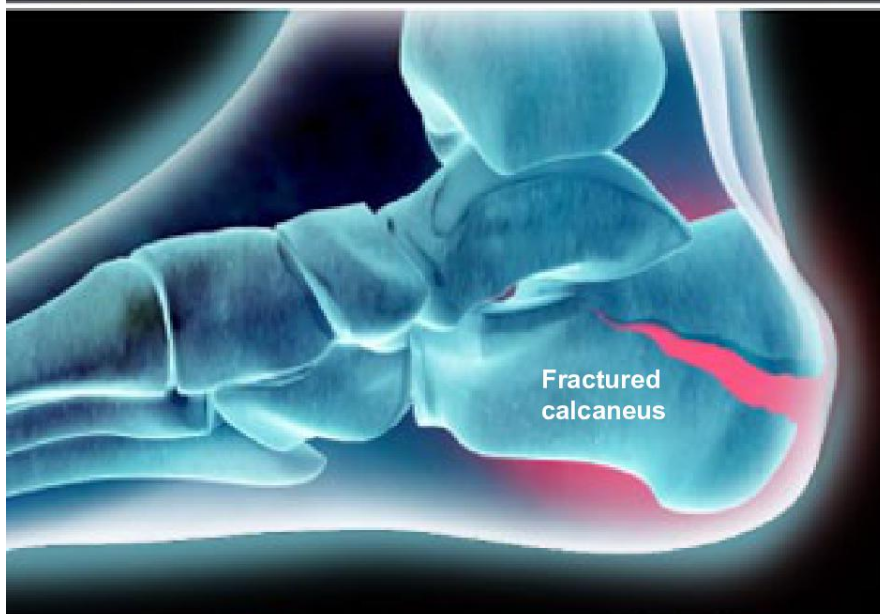




Calcaneal Tongue-Type Fracture Fixation (Open Reduction and Internal Fixation)



Overview

This procedure is used to correct a "tongue-type" fracture of the calcaneus (the heel bone). During this procedure, the surgeon stabilizes the bone with hardware to allow the bone to heal properly.

Preparation

In preparation for the procedure, the patient is positioned and anesthesia is administered. The surgeon creates one or more incisions on the foot to access the fractured calcaneus.

Fixation

The surgeon carefully realigns the bones and stabilizes the fractures with several screws. The surgeon may choose from a variety of types of screws, and possibly rigid plates or wires.

End of Procedure and Aftercare

When the procedure is complete, the incisions are closed and the foot is bandaged and placed in a padded cast. The patient will not be allowed to bear weight on the foot for about six to twelve weeks. A walking brace or shoe may be required until the fracture has fully healed.