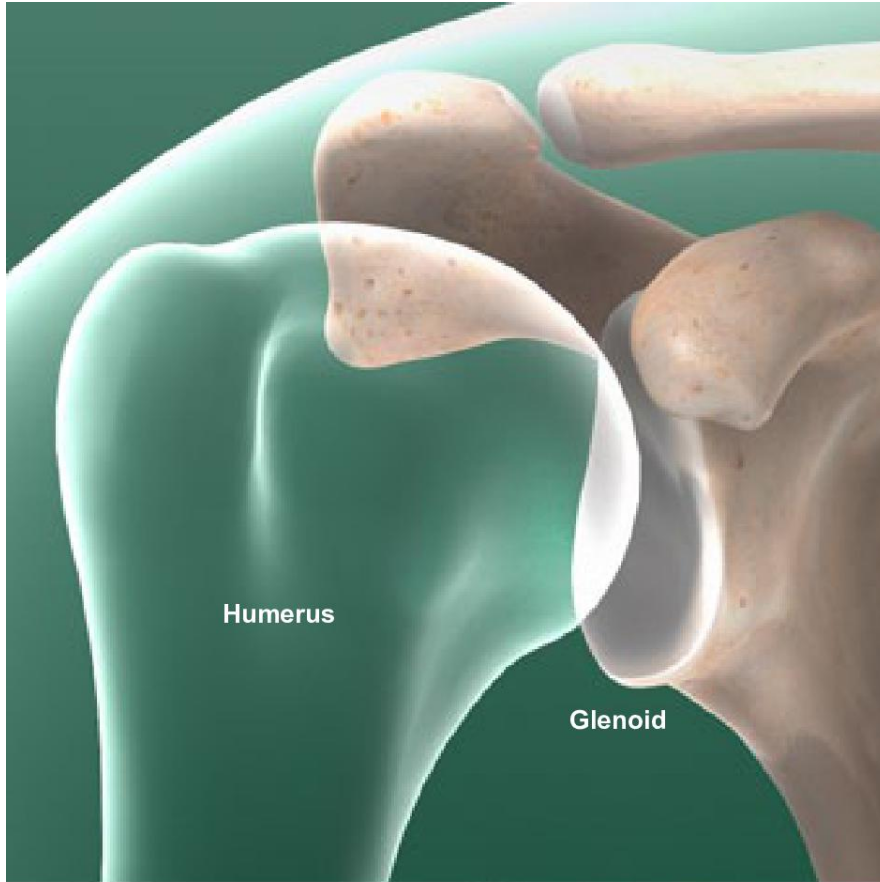




Fracture of the Shoulder Socket (Glenoid Fracture)



Overview

This is a fracture of a part of the shoulder blade called the "glenoid." This is the socket that holds the head of the humerus (the bone of the upper arm). A glenoid fracture can allow the head of the humerus to slip out of the socket.

Causes

This type of fracture is usually caused by severe trauma. Falls and road accidents are common culprits.

Symptoms

Symptoms may include pain, bruising and swelling. You may not be able to move your arm. If you can, you may experience a grinding sensation when you move it. If a broken bone shifts out of place, you may notice a lump beneath your skin.

Treatment

Treatment depends on the type and severity of your fracture. Many fractures are treated by immobilizing the arm in a sling while the fracture heals. Others require surgery. Your healthcare provider can create a care plan that is right for your needs.