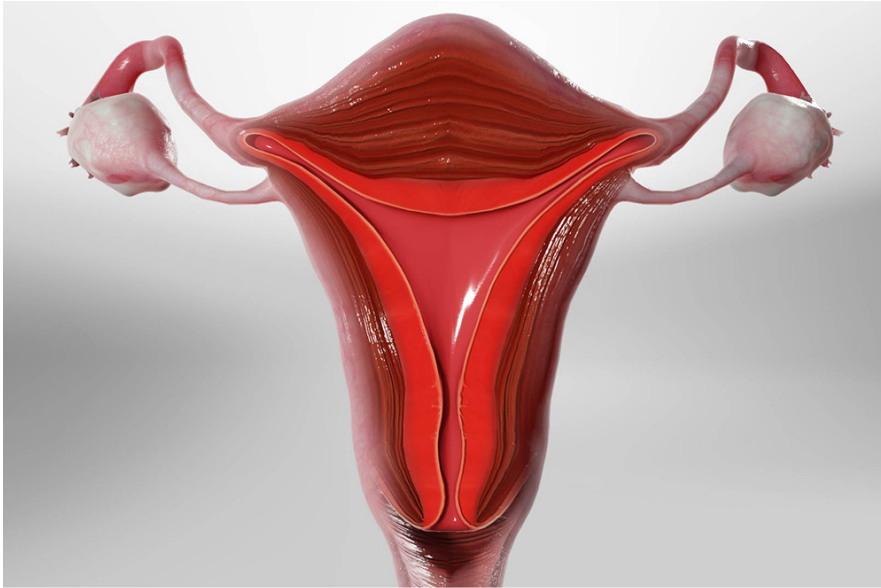




Endometrial Ablation (Cryoablation Method)



Overview

This procedure destroys the endometrium. That's the layered tissue that lines the inner wall of your uterus. This tissue sheds when you have your monthly period. Ablation is sometimes used to treat heavy menstrual bleeding. It is used only when you do not want to get pregnant in the future.

Preparation

To begin, you lie on an exam table that supports your legs and feet. We may give you medicine to get you relaxed and numb. We carefully place a device called a "speculum" into your vagina. The speculum holds your vagina open so we can reach your cervix. That's the lower part of your womb. We may also need to enlarge the opening in the center of your cervix. We do this with a thin rod called a "dilator."

Treating the uterus

Now it's time to treat your uterus. We do this with a cryoablation probe. It goes through your cervix and into your uterus. We may use an ultrasound wand on your belly to guide us in placing it. Then, we activate the probe. The end of the probe gets very cold. We use it to freeze and destroy the endometrium.

Conclusion

When it's done, we watch you for a brief time. Then, you can go home. Follow your care tips for a safe recovery. Getting pregnant after ablation can lead to serious problems. So after your procedure you must use effective birth control. Your healthcare provider will help you make a plan to prevent pregnancy.

