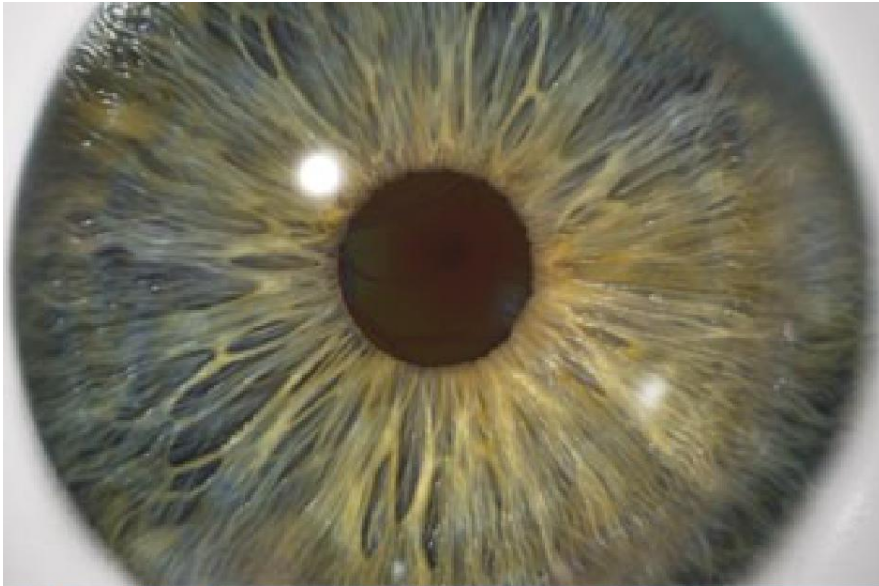




Age-Related Macular Degeneration, Dry Type (Dry AMD)



Overview

This disease causes vision loss. It affects the center of your visual field. It usually affects both eyes, but in some people only one eye is affected. This type of degeneration is a gradual thinning and breaking down of the macula. The macula is part of the light-sensitive retina tissue that sees fine details in the center of your visual field.

Causes and Risk Factors

The cause of this disease is not fully understood. It may be linked to deposits of fatty waste and minerals, called "drusen", that collect beneath the macula. You have an increased risk for this disease if you are older than 65. You are at a higher risk if you are white, and if you have certain genetic factors. Smoking, obesity and cardiovascular disease also increase your risk.

Symptoms

Symptoms include a gradual loss of central vision. Colors may seem muted. Faces may become hard to recognize.

Treatment

Treatment options for this disease are very limited. You may benefit from vitamin supplements. If you are a smoker, you may benefit from quitting. Certain people who are at a very advanced stage of this disease may benefit from a miniature telescope implant. Your doctor can create a care plan that is right for your needs.

