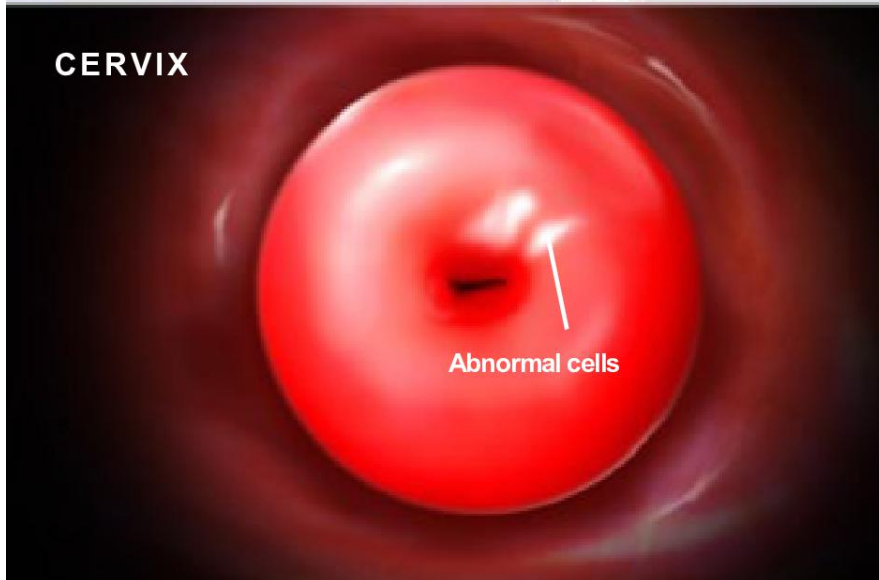
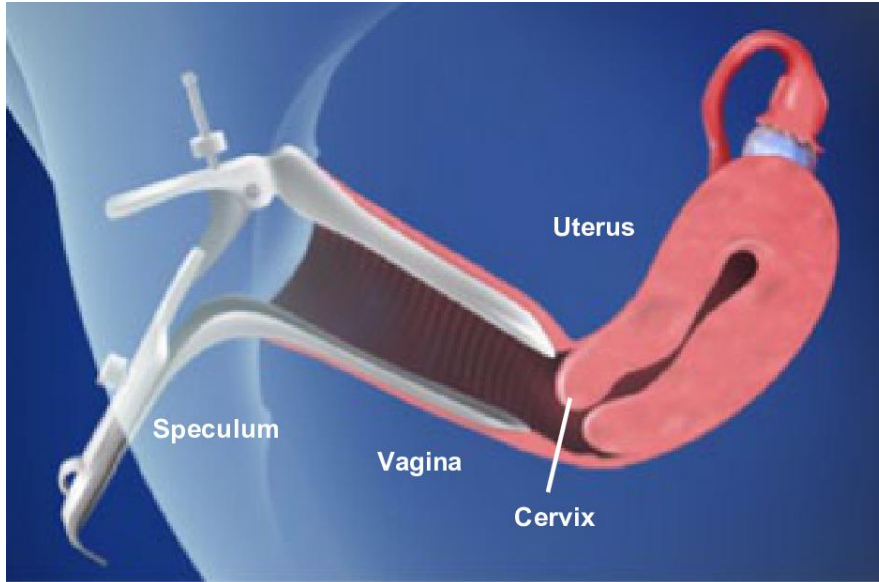




Colposcopy-Guided Cervical Biopsy



Overview

This is a method for taking samples of abnormal tissue from your cervix. Your cervix is the lower part of your womb, and it's a place where cancer can form. So when we see abnormal cells there, we want to study them closely.

Preparation

To begin, you lie on an exam table that supports your legs and feet. We carefully place a device called a "speculum" into your vagina. The speculum holds your vagina open so we can reach your cervix.

Colposcope

Now we position a viewing instrument called a "colposcope." It's placed at the opening of your vagina. It has a light and a magnifying lens that lets us see your cervix clearly. We use the scope to find areas of abnormal tissue. We may wash your cervix with a solution that makes abnormal tissue easier to see.

Biopsy

Now it's time to collect some of the abnormal tissue. We call this a "biopsy." First, we may numb your cervix. We may also insert a device to hold your cervix steady. Then, we take one or more tissue samples from its surface. We may also take samples from the endocervical canal. That's the tube in the center of your cervix that leads to your womb. There are a few ways to collect samples. We choose the method that's right for you.

Conclusion

When we're done, we may apply medicine to your cervix to stop any bleeding. We watch you for a brief time, then you can go home. Follow your care tips for a safe recovery. We'll send your tissue samples to a lab for study, and contact you soon with the results.