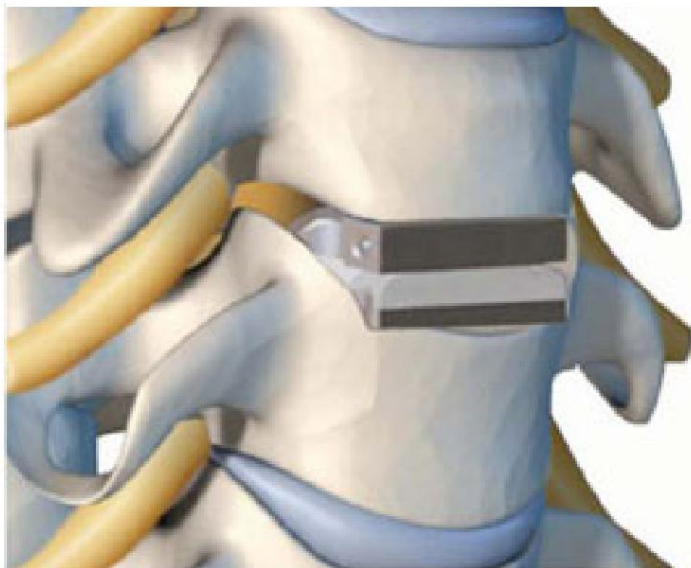
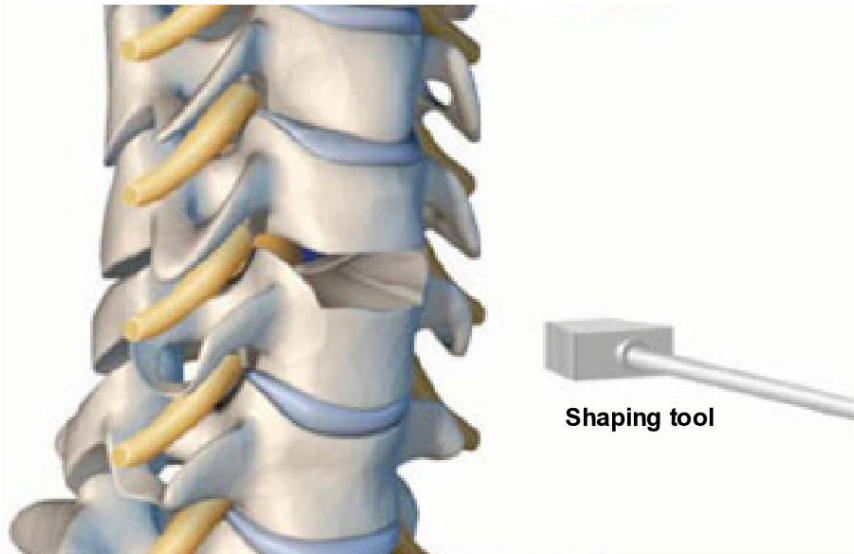
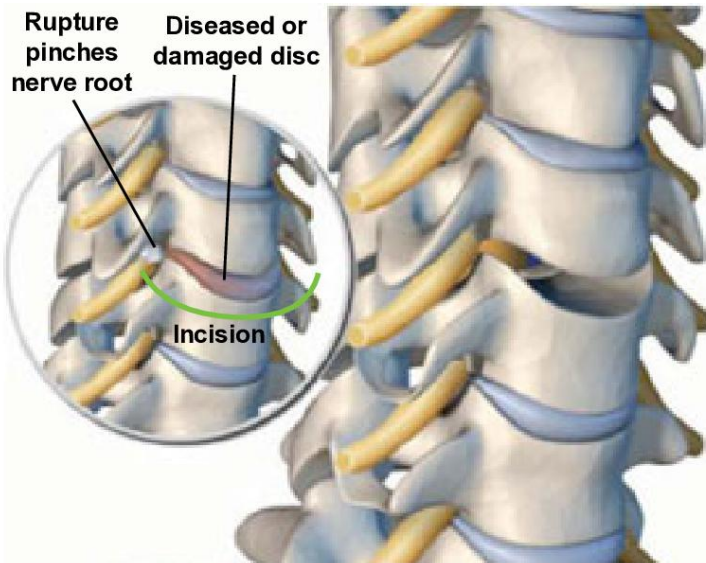




Artificial Cervical Disc Replacement (PCM)



Overview

(Caution: Investigational Device) A goal of this procedure is to relieve the pain caused by pinched nerves due to a damaged disc in the cervical spine. The diseased or damaged disc will be replaced with a specialized implant.

Removing the Disc

The surgeon creates a small incision in the front of the neck to gain access to the spine. The diseased disc is removed from between the vertebral bodies.

Preparing the Vertebrae

The surfaces of the vertebral bodies are cleared of all damaged disc tissue and shaped to accept the implant.

Implanting the Disc

The PCM® artificial disc is inserted into the space between the vertebrae and carefully tapped into place. The endplates are designed to bond tightly to the vertebral bodies, stabilizing the spine.

Alternative Treatment: Spinal Fusion

The spinal fusion procedure uses a metal plate to connect the vertebrae above and below the removed disc.

PCM® Artificial Disc

The PCM® implant is designed to preserve motion.