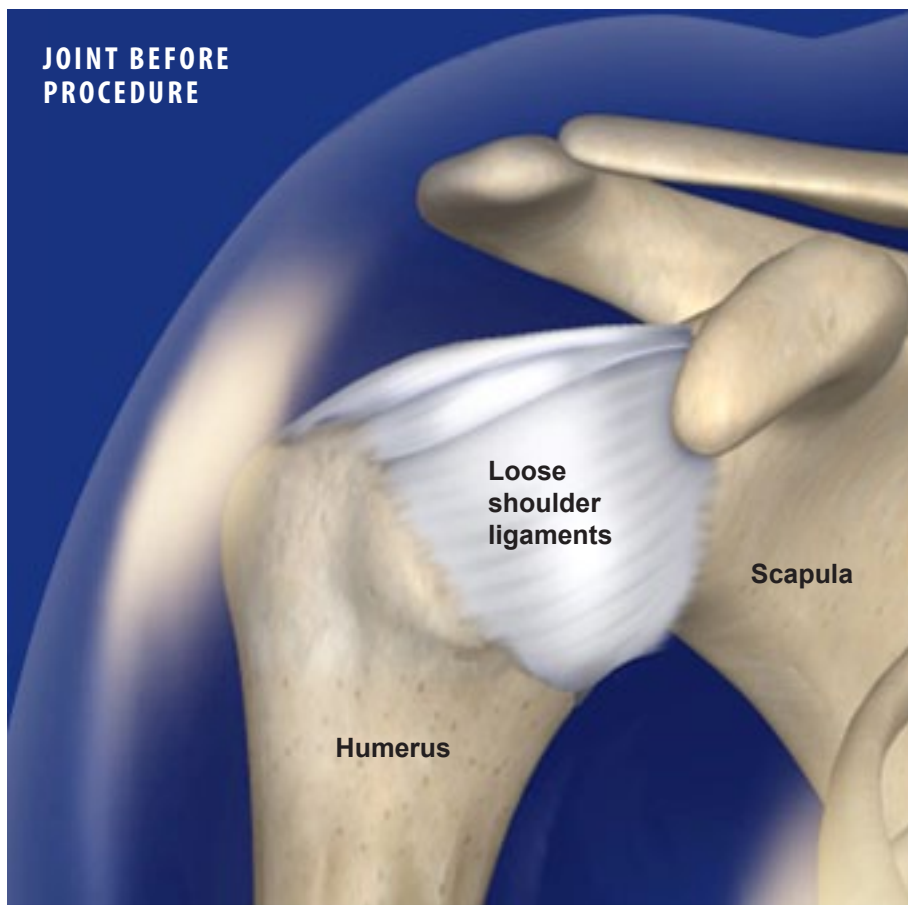


Arthroscopic Capsular Plication

JOINT BEFORE PROCEDURE



Overview

This minimally-invasive surgery is used to relieve pain and loss of shoulder stability for patients with loose shoulder. A radiofrequency (RF) probe is inserted into the shoulder to stimulate the tissue capsule that surrounds the shoulder joint. This causes the tissue to contract, tightening the shoulder joint.

Preparation

The patient is positioned so that the shoulder is clearly visible to the surgeon, and the area is cleaned and sterilized. Local anesthesia is administered to numb the injection site and a sedative is provided to relax the patient. Anesthesia is administered.

Accessing the Shoulder

The surgeon creates two to three small incisions on the shoulder and inserts an arthroscopic camera and the RF probe. The camera allows the surgeon to view the procedure on a monitor.

Tightening the Shoulder

Once the shoulder has been diagnosed, the physician uses the RF probe to heat and stimulate the tissue capsule surrounding the shoulder joint. This stimulation causes the tissue to contract. The surgeon will stimulate only portions of the capsule that are necessary to provide sufficient tightness in the joint.

End of Procedure

The incisions are closed with sutures or surgical staples. The shoulder is bandaged. The patient will be given pain relievers and should be able to leave the hospital the same day. Physical therapy is begun 2-3 weeks after surgery.

JOINT AFTER PROCEDURE

