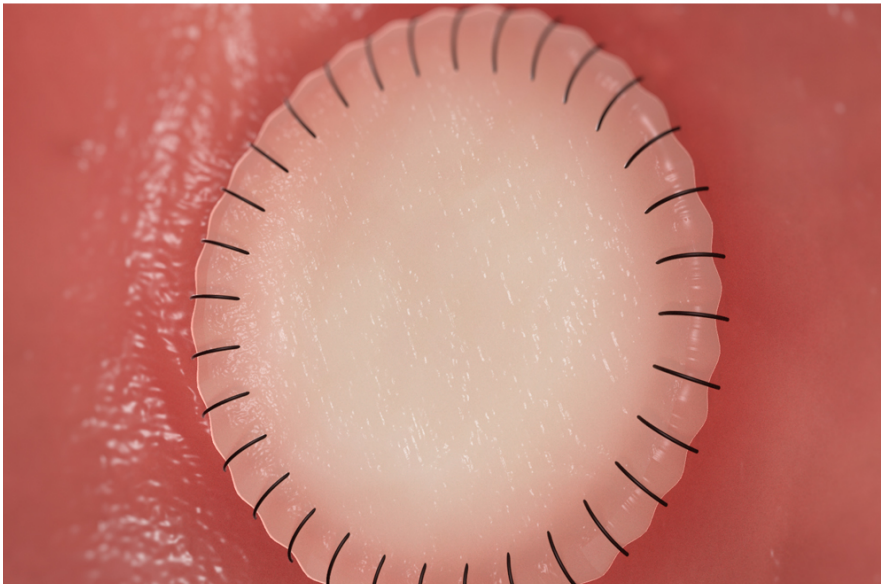
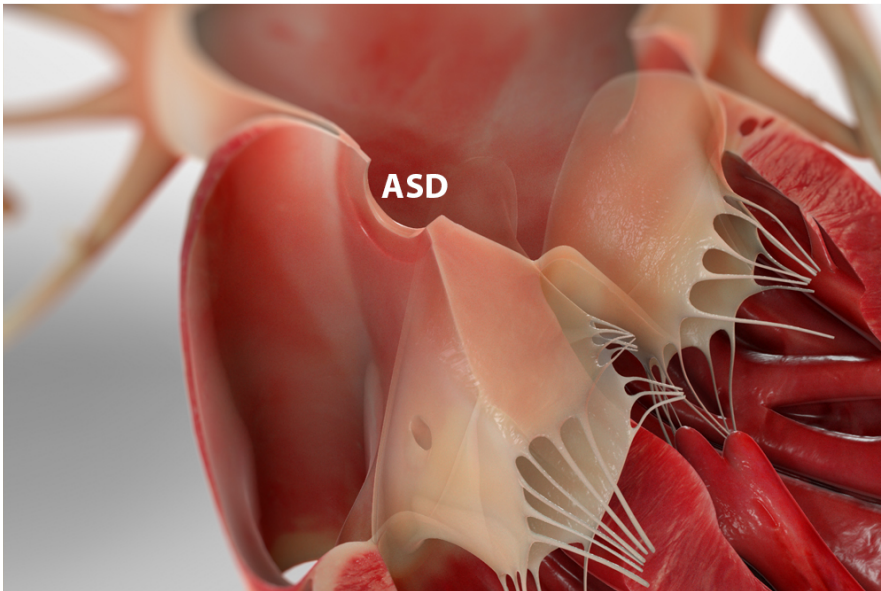
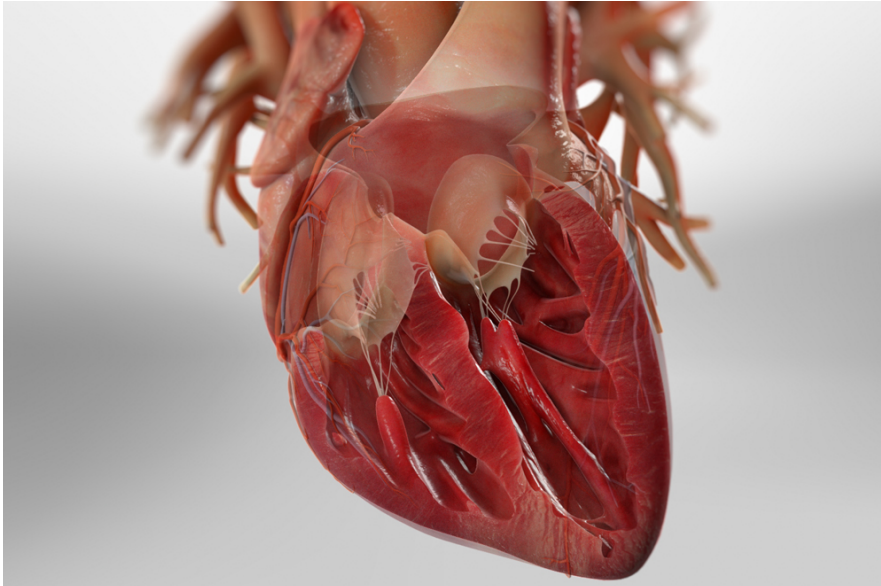




## Atrial Septal Defect Repair (Open Surgery Method)



### Overview

This surgery fixes a hole called an "ASD." It's in the wall between the heart's two upper chambers. These chambers are called the "atria." The hole lets blood without oxygen mix with blood that has oxygen in it. This decreases the amount of oxygen pumped out to the body. We usually close an ASD early in childhood to avoid health problems later on.

### Preparation

To begin, we give the patient medicine to put them to sleep. The surgeon makes an incision in the chest. We stop the heart for the procedure. A heart-lung machine will supply blood and oxygen to the body.

### Patching the hole

Now, we open one of the heart's atria to get to the hole. If it's a small hole, we may be able to close it with sutures. For a larger hole, we may need to sew a patch over it to close it.

### End of procedure

When the procedure is done, the heart is closed and then re-started. The chest is closed and the incision is bandaged. We closely watch the patient in the hospital until it's safe for them to go home. Follow your care tips for a safe recovery.