

Understanding PEG Tube Placement

PEG (percutaneous endoscopic gastrostomy) is a type of procedure. It is done to put a tube in place for feeding. It is used when a person has trouble eating. A feeding tube may be used if:

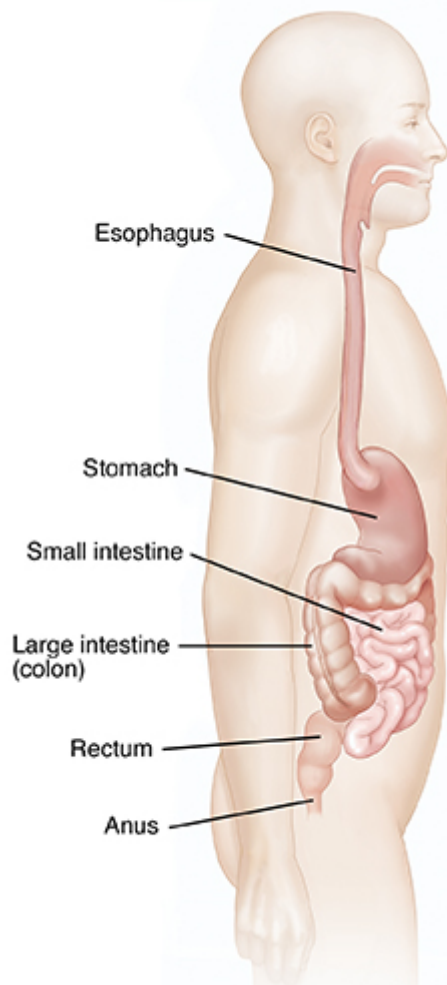
- You can't swallow food safely
- You have a blockage in your swallowing tube (esophagus) or stomach
- You can't take enough food by mouth

The path of digestion

When you eat, you chew your food into small pieces and swallow. The food moves down your esophagus. It then goes into your stomach. From there, it goes into your small intestine and then into your large intestine. Solid waste (stool) is stored in your rectum. It is then passed out through the anus.

A feeding tube lets food bypass the mouth and esophagus. It goes right into your stomach or small intestine.

Digestion works the same with a feeding tube as it does when you take food by mouth. You get the same nutrition by tube feeding as you would by eating.



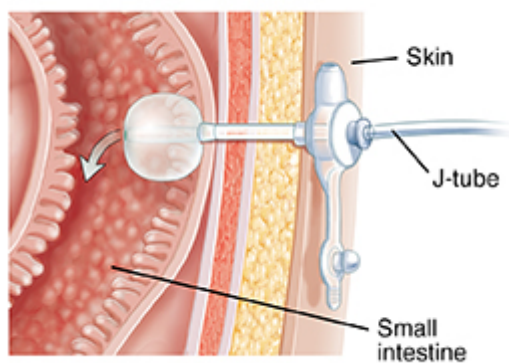
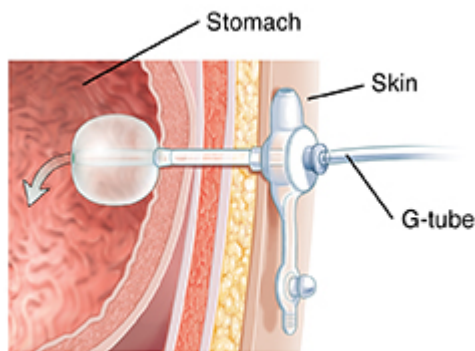
How a feeding tube is placed

You will have 1 of these:

- **Tube in the stomach.** A **G-tube** is placed in the stomach. The G stands for gastrostomy. (This is an opening in the stomach.) The tube may also be called a **PEG tube**.
- **Tube in the small intestine.** In some cases, the tube may be placed in the stomach and passed through to a section of the small intestine. This section is called the jejunum. The tube may be called a **PEJ tube**. The J stands for jejunum.

Your healthcare provider places a feeding tube with the aid of a tool called an endoscope. This is a long, flexible, lighted tube. It lets your provider see inside your stomach. It is passed through your mouth and down to your stomach.

Next, they make a small cut through your skin and into your stomach. They insert the feeding tube through this small cut. They do this while watching through the endoscope. A balloon or cap holds the tube in place. Your healthcare provider then places a small bandage over the cut.



Talk with your healthcare team

If you have any questions or concerns about the feeding tube or its care, talk with your provider. Tell them if you want a partner or caregiver instructed about the feeding tube.